

Installation and Setup Guide

The PROSiXSHOCK is a 3-zone wireless shock/door/window sensor is intended for use with Honeywell Home controls that support PROSiX™ series devices.

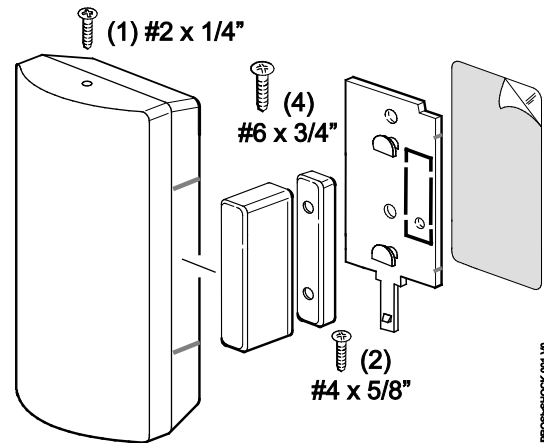
It provides

- Reed switch/magnet zone
- External wired contact zone
- Built-in shock sensor zone (designed to protect windows and doors)

Typical shock protection area:

10 - 12 ft. diameter / 5 - 6 foot radius (3.05m – 3.66m diameter / 1.52m – 1.83m radius)

The coverage area can vary depending on the mounting surface.



INSTALLATION OPTIONS

The PROSiXSHOCK can be installed with several options:

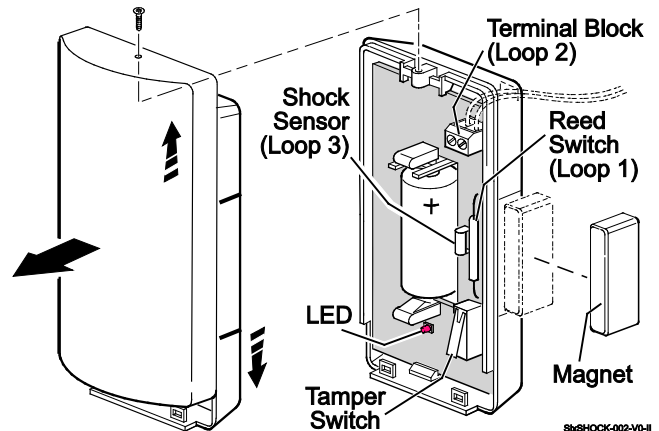
- Loop 1: Normally closed, built-in reed switch, used with the included magnet
- Loop 2: Externally wired, closed-circuit contact loop connected to the Terminal Block (unsupervised)

NOTE: Wiring limit is 3ft.

- Loop 3: Built-in shock sensor. Red LED flashes briefly upon sensing shock

Magnet Gap specifications:

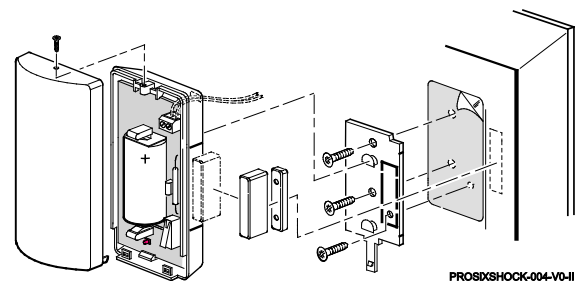
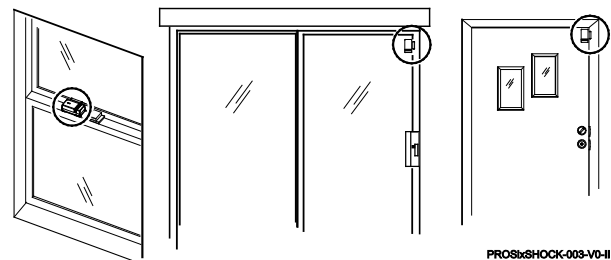
- Make gap is at least 0.8"
- Break gap is at least 0.95"
(reduced about 30% for steel)



MOUNT THE PROSiXSHOCK

1. To open the device, firmly slide the front and back housings in opposite directions and pull them apart.
2. The PROSiXSHOCK sensor **MUST** be mounted as follows:
 - On swinging doors: mount on upper corner of door (not door frame); opposite hinge is ideal
 - On sliding windows and doors: on the frame (on moving section when magnet is used)
3. Mount sensor as shown, using the double-sided tape and screws provided.
4. Secure the front cover with the #2 x 1/4" screw.

After enrolling and before mounting, verify adequate signal strength by conducting a sensor test (see controller's instructions) with the device in its intended mounting location. Adjust the device location and orientation as necessary.



ENROLL AND SET UP

You must enroll the device in the control. Refer to the control's programming instruction for detailed procedures.

Set the controller in Programming Mode and when prompted:

1. Pull the battery tab to activate the PROSiXSHOCK. (Use the magnet if the battery tab is removed.)
2. The LED flashes (up to about 20 seconds*) during enrollment.
 - All services (Reed, Terminal Block, and Shock) are enrolled in sequential (or next available) zone numbers.
 - The device sends its unique MAC ID (Serial Number); the controller registers the device and displays the transmitter data on screen.

***NOTE:** Enrollment time varies depending on the signal strength between the device and the controller.

3. When done, the LED is ON for 3 seconds to confirm enrollment.

NOTE: If the device is not successfully enrolled during the enrollment period, the LED turns off and the device powers down. Activate a tamper, wired service (loop) or the reed switch to restart the enrollment process.

4. Program each zone being used:

Reed Switch Zone (loop 1)

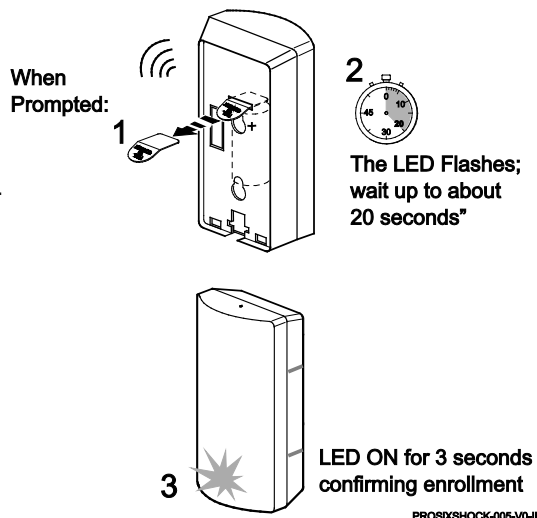
Terminal Block Zone (loop 2)

Shock Zone (loop 3)

After enrolling, verify adequate signal strength by conducting a sensor test (see controller's instructions) with the device in its intended mounting location. Adjust the device location and orientation as necessary.

DEMO MODE (NO ENROLLMENT NEEDED)

1. Remove the battery pull tab from the device.
2. Install the mounting plate onto the back cover to insure both tampers are closed.
3. The device will attempt to pair with a control (Flashing green LED for ~20 seconds, which is visible through the top cover)
4. The Green LED will turn off and within a minute the device is defaulted to maximum shock sensitivity for 10 minutes.
5. Strike the device in the palm of your hand, the red LED will flash through the front cover indicating a shock event.
6. When ready to learn the device into a control open/close the cover again or trip the reed switch using a magnet. The pairing time window will start again.



IMPORTANT: Once enrolled in a system, the PROSiXSHOCK cannot be used with another controller until it is removed from the current controller. See the Controller's instructions for details.

SENSITIVITY ADJUSTMENT

NOTE: The PROSiXSHOCK sensitivity must be set after mounting and enrollment. See the Controller's instructions for details.

The PROSiXSHOCK has the following sensitivity settings:
Maximum – Medium – Low - Lowest

1. Verify the sensitivity setting is adequate by striking the protected surface with the soft part of your fist at the point farthest from the device.
2. If sensitivity is adequate the red LED flashes briefly (remove cover for easier viewing of LED).
If the LED does not flash, select the next higher sensitivity setting and repeat from step 1.

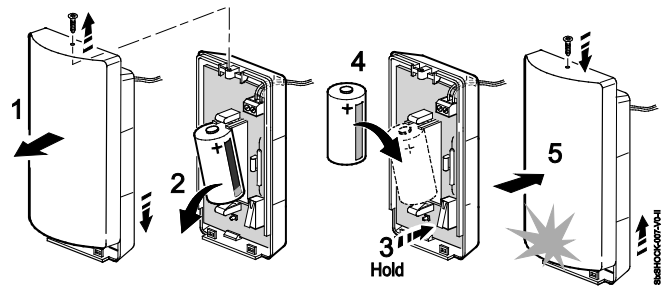


24-HOUR ENROLLMENT DELETION AND DEFAULT

If the device is enrolled in a panel different than the intended panel, and you are unable to delete it from the unintended panel, reset the device to factory default setting:

1. Open the cover and remove the battery.
2. Hold down the tamper switch while reinserting the battery. Rapid LED flashing indicates successful deletion (LED flashes as if in enrollment mode). If LED does not flash, delete was not successful.
3. Reattach the cover.

This procedure is available for 24 hours after enrollment with a panel and the device remains powered (battery installed).



LED INDICATIONS

LED	Status
Rapid Flashes for about 20 seconds, then ON for 3 seconds	Power Up – Enrollment
Slow Flashes	Power Up – Device enrolled; Wall or Cover Tamper activated. To stop flashes, clear the tamper condition by reconnecting to the mounting plate and reattaching the cover. It also times out after 10 minutes.
ON (while in Programming Mode)	Sensor LED toggles on and off when the sensor is selected. See Sensor Location Feature.

BATTERY REPLACEMENT

- Push the bottom latch of the mounting bracket back to disengage it. Then slide the back housing up and out to remove it from the mounting bracket.
- Slide the front and back housings in opposite directions and pull the housings apart.
- Remove the battery, **wait 10 seconds**, then insert a new battery.

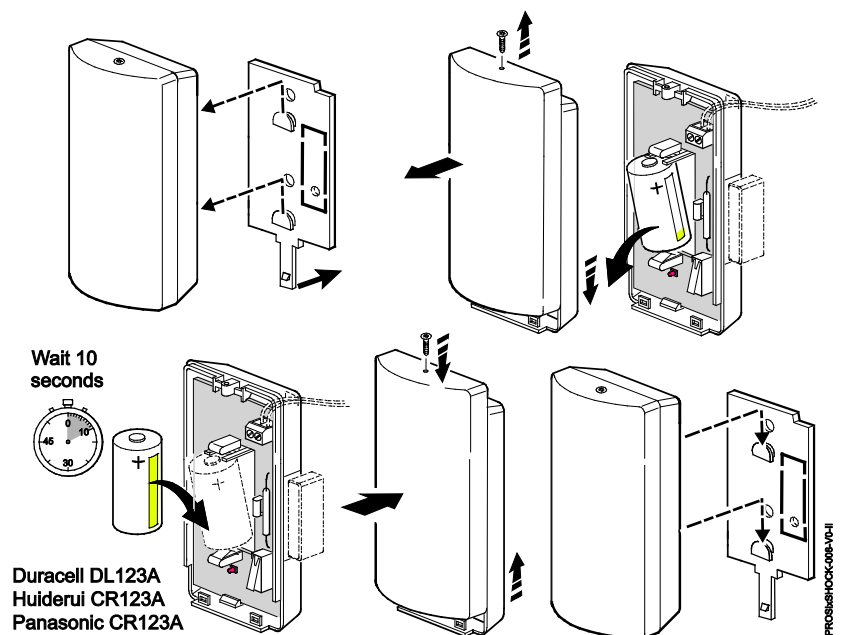
Recommended batteries:

Duracell DL123A, Huiderei CR123A,
Panasonic CR123A, Resideo 466

- Place the front and back housings together and slide them together.

BATTERY CAUTION: Risk of fire, explosion and burns. Do not recharge, disassemble, heat above 212°F (100°C) or incinerate. Dispose of used batteries properly. Keep away from children.

NOTE: Constant exposure to high or low temperature or high humidity may reduce battery life.



SPECIFICATIONS:

Battery: 1 x 3V Lithium, Resideo 466, Panasonic CR123A, Duracell DL123A or Huiderui CR123A

Tamper: Cover and Wall

RF Frequency: 2.4GHz

Operating Temperature: 32° – 122° F / 0° – 50° C
(Agency Compliance 32° – 120° F / 0° – 49° C)

Relative Humidity: 95% max. (Agency Compliance - 93% max.), non-condensing

Dimensions: 1" H x 3.13" L x 1.61" W / 25.5 mm H x 79.5 mm L x 41 mm W

APPROVAL LISTINGS:

FCC / IC

cETLus Listed

Conforms to UL 634

Certified to ULC/ORD-C634, ULC S306

Other Standards:

RoHS



Product must be tested at least once each year

FEDERAL COMMUNICATIONS COMMISSION (FCC) & INDUSTRY CANADA (IC) STATEMENTS

The user shall not make any changes or modifications to the equipment unless authorized by the Installation Instructions or User's Manual. Unauthorized changes or modifications could void the user's authority to operate the equipment.

CLASS B DIGITAL DEVICE STATEMENT

This equipment has been tested and found to comply with the limits for a Class B digital device, as defined by FCC Rules Part 15.105. The Class B Digital Device statement can be viewed at:

<https://customer.resideo.com/en-US/support/residential/codes-and-standards/FCC15105/Pages/default.aspx>

FCC / IC STATEMENT

This device complies with Part 15 of the FCC Rules, and Industry Canada's license-exempt RSSs. Operation is subject to the following two conditions: (1) This device may not cause harmful interference, and (2) This device must accept any interference received, including interference that may cause undesired operation.

Cet appareil est conforme à la partie 15 des règles de la FCC et exempt de licence RSS d'Industrie Canada. Son fonctionnement est soumis aux conditions suivantes: (1) Cet appareil ne doit pas causer d'interférences nuisibles. (2) Cet appareil doit accepter toute interférence reçue y compris les interférences causant une réception indésirable.

RF EXPOSURE

Warning – The antenna(s) used for this device must be installed to provide a separation distance of at least 7.8 inches (20 cm) from all persons and must not be co-located or operating in conjunction with any other antenna or transmitter except in accordance with FCC and ISED multi-transmitter product procedures.

Mise en Garde

Exposition aux Fréquences Radio : La/les antenne(s) utilisée(s) pour cet émetteur doit/doivent être installée(s) à une distance de séparation d'au moins 20 cm (7,8 pouces) de toute personne et ne pas être située(s) ni fonctionner parallèlement à tout autre transmetteur ou antenne, excepté en conformité avec les procédures de produit multi transmetteur FCC et ISED.

REFER TO THE INSTALLATION INSTRUCTIONS FOR THE CONTROL WITH WHICH THIS DEVICE IS USED, FOR DETAILS REGARDING LIMITATIONS OF THE ENTIRE ALARM SYSTEM.

Responsible Party / Issuer of Supplier's Declaration of Conformity: Ademco Inc., a subsidiary of Resideo Technologies, Inc., 2 Corporate Center Drive., Melville, NY 11747, Ph: 516-577-2000

The product should not be disposed of with other household waste. Check for the nearest authorized collection centers or authorized recyclers. The correct disposal of end-of-life equipment will help prevent potential negative consequences for the environment and human health. Any attempt to reverse-engineer this device by decoding proprietary protocols, de-compiling firmware, or any similar actions is strictly prohibited.

SUPPORT & WARRANTY INFORMATION

For the latest documentation and support, please go to:
www.resideo.com

For the latest warranty information, please go to:
www.security.honeywellhome.com/warranty

The Honeywell Home Trademark is used under license from Honeywell International Inc.
This product is manufactured by Resideo Technologies, Inc. and its affiliates.

resideo

2 Corporate Center Drive, Suite 100
P.O. Box 9040, Melville, NY 11747
© 2020 Resideo Technologies, Inc.
www.resideo.com



PROSIXSHOCK 800-25219B 2/19 Rev B