

Honeywell Home

ADEMCO VISTA SERIES

VISTA-21iPLTE/V21SIALTE

Security System

Programming Guide

RECOMMENDATIONS FOR PROPER PROTECTION

The Following Recommendations for the Location of Fire and Burglary Detection Devices Help Provide Proper Coverage for the Protected Premises.

Recommendations For Smoke And Heat Detectors

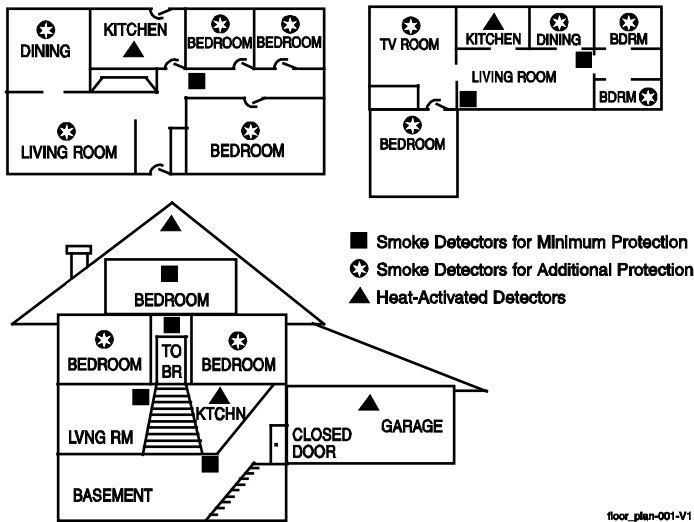
With regard to the number and placement of smoke/heat detectors, we subscribe to the recommendations contained in the National Fire Protection Association's (NFPA) Standard #72 noted below.

Early warning fire detection is best achieved by the installation of fire detection equipment in all rooms and areas of the household as follows: For minimum protection a smoke detector should be installed outside of each separate sleeping area, and on each additional floor of a multi-floor family living unit, including basements. *The installation of smoke detectors in kitchens, attics (finished or unfinished), or in garages is not normally recommended.*

For additional protection the NFPA recommends that you install heat or smoke detectors in the living room, dining room, bedroom(s), kitchen, hallway(s), attic, furnace room, utility and storage rooms, basements and attached garages.

In addition, we recommend the following:

- Install a smoke detector inside every bedroom where a smoker sleeps.
- Install a smoke detector inside every bedroom where someone sleeps with the door partly or completely closed. Smoke could be blocked by the closed door. Also, an alarm in the hallway outside may not wake up the sleeper if the door is closed.
- Install a smoke detector inside bedrooms where electrical appliances (such as portable heaters, air conditioners or humidifiers) are used.
- Install a smoke detector at both ends of a hallway if the hallway is more than 40 feet (12 meters) long.
- Install smoke detectors in any room where an alarm control is located, or in any room where alarm control connections to an AC source or phone lines are made. If detectors are not so located, a fire within the room could prevent the control from reporting a fire or an intrusion.



THIS CONTROL COMPLIES WITH NFPA REQUIREMENTS FOR TEMPORAL PULSE SOUNDING OF FIRE NOTIFICATION APPLIANCES.

Recommendations For Proper Intrusion Protection

For proper intrusion coverage, sensors should be located at every possible point of entry to a home or commercial premises. This would include any skylights that may be present, and the upper windows in a multi-level building.

In addition, we recommend that radio backup be used in a security system so that alarm signals can still be sent to the alarm monitoring station in the event that the telephone lines are out of order (alarm signals are normally sent over the phone lines, if connected to an alarm monitoring station).

TABLE OF CONTENTS

PROGRAMMING MODE COMMANDS.....	4
DATA FIELD PROGRAMMING FORM	5
*29 INTERNAL DEVICE MENU MODE	10
Configurable Zone Types Worksheets.....	15
*56 ZONE PROGRAMMING MENU MODE	16
*58 EXPERT ZONE PROGRAMMING MODE.....	16
WIRELESS KEY PROGRAMMING & TEMPLATES.....	17
*57 FUNCTION KEY PROGRAMMING.....	17
*79 OUTPUT DEVICE MENU MODE	18
*80 OUTPUT FUNCTION MENU MODE	18
*81 ZONE LIST MENU MODE	18
*82 ALPHA DESCRIPTOR PROGRAMMING.....	19
SETTING SCHEDULES.....	20
AVS SYSTEM ENABLE AND QUICK PROGRAMMING COMMANDS.....	20
UPLOADING/DOWNLOADING VIA THE INTERNET	21
ZONE TYPE DEFINITIONS	22
SCHEDULES WORKSHEET	23
*56 ZONE PROGRAMMING WORKSHEET	24
*57 FUNCTION KEY WORKSHEET.....	26
OUTPUT RELAYS WORKSHEET FOR *79, *80 and *81.....	26
*81 ZONE LISTS WORKSHEET.....	27
*80 OUTPUT DEFINITIONS.....	28
5800 SERIES TRANSMITTER INPUT LOOP IDENTIFICATION	30
TABLE OF DEVICE ADDRESSES.....	31
UL NOTICES	31
SIA QUICK REFERENCE GUIDE	31
FEDERAL COMMUNICATIONS COMMISSION (FCC) PART 15 STATEMENTS	32
TELEPHONE/MODEM INTERFACE	32

TO ENTER PROGRAMMING MODE (using an alpha keypad connected to the control):

Compatibility: This document applies to systems with microprocessor version 4.21 or higher.

- A. POWER UP, then press [*] and [#] at the same time, within 50 seconds of powering up (this method must be used if Q98 was used to exit program mode). **OR**
 B. Enter Installer Code (4112) then 8 0 0.

PROGRAMMING MODE COMMANDS

Task	Command/Explanation
Go to a Data Field	Press [*] + [Field Number], followed by the required entry.
Entering Data	When the desired field number appears, simply make the required entry. When the last entry for a field is entered, the keypad beeps three times and automatically displays the next data field in sequence. If the number of digits that you need to enter in a data field is less than the maximum digits available (for example, the phone number fields *41, *42), enter the desired data, then press [*] to end the entry. The next data field number is displayed.
Review a Data Field	Press [#] + [Field Number]. Data will be displayed for that field number. No changes will be accepted in this mode.
Deleting an Entry	Press [*] + [Field Number] + [*]. (Applies only to fields *40 thru *46, *94, and pager fields)
Initialize Download ID	Press *96. Initializes download ID and subscriber account number.
Reset Factory Defaults	Press *97. Sets all data fields to original factory default values.
Zone Programming	Press *56. Zone characteristics, report codes, alpha descriptors, and serial numbers for 5800 RF transmitters.
Function Key Programming	Press *57. Unlabeled keypad keys (known as ABCD keys) for special functions
Zone Programming (Expert Mode)	Press *58. Same options as *56 mode, but with fewer prompts. Intended for those familiar with this type of programming, otherwise *56 mode is recommended.
Output Device Mapping	Press *79. Assign module addresses and map individual relays/powerline carrier devices
Output Programming	Press *80. 4229 or 4204 Relay modules, Powerline Carrier devices, or on-board triggers
Zone List Programming	Press *81. Zone Lists for relay/powerline carrier activation, chime zones, pager zones, etc.
Alpha Programming	Press *82. Zone alpha descriptors
IP/Cell Programming	Press *29. For programming the IP/Cell options.
Exit Program Mode with installer code lockout	Press *98. Exits programming mode and prevents re-entry by: Installer Code + 8 + 0 + 0. To reenter programming mode, the system must be powered down, then powered up. Then use method A above. See field *88 for other *98 Program mode lockout options.
Exit Program Mode	Press *99. Exits programming mode and allows re-entry by: Installer Code + 8 + 0 + 0 or method A above.
Scheduling Mode	Enter code + [#] + 64. Create schedules to automate various system functions.
Site-Initiated Download	Installer code + [#] + 1 (perform while system is disarmed and in normal mode)

USING REMOTE SERVICES

This control supports Remote Interactive Services (RIS) such as Total Connect 2.0, Tuxedo/Z-Wave scenes, and Home Automation (Control 4, 4232CBM), if supported by the communication service in use.

- Remote Interactive Services is automatically enabled in the control; device address 25 is automatically assigned.
- Use programming field *189 to enable a remote services emulated keypad address.
- Use *29 Menu mode to enable the communication device.
- If using Total Connect 2.0, use AlarmNet 360 to program the device and enable TC2 services. Be sure to “send” the programming data to the Communicator.

SPECIAL PROGRAMMING MESSAGES

- **OC** = OPEN CIRCUIT (no communication between Keypad and Control).
- **EE** or **ENTRY ERROR** = ERROR (invalid field number entered; re-enter valid field number).
- After powering up, **AC**, **dl** (disabled) or “**Busy Standby vx.x** (firmware revision) **DI** will be displayed after approximately 4 seconds. This will revert to a “**Ready**” message in approximately 1 minute, which allows PIRS, etc. to stabilize.
You can bypass this delay by pressing [#] + [0].
- If **E4** or **E8** appears, more zones than the expansion units can handle have been programmed. The display will clear after you correct the programming.

AVS QUICK PROGRAMMING COMMANDS (for AAV sessions using the AVS system)

The following commands automatically configure the control for AVS operation.

- **installer code + [#] + 03:** enable AVS operation
- **installer code + [#] + 04:** enable AVS operation and enable panel sounds on the AVST speaker
- **installer code + [#] + 05:** remove all programming options set by [#] + 03 quick command
- **installer code + [#] + 06:** remove all programming options set by [#] + 04 quick command

Refer to the AVS SYSTEM ENABLE and QUICK PROGRAMMING COMMANDS section for details on the specific options that are set with each command, depending on the control used.

To select the AAV session communication path (phone line/communication device), see field *55 Dynamic Signaling Priority. To enable AAV operation, use *91 Options field (option 4).

IMPORTANT: The Real-Time Clock must be set before the end of the installation. See procedure in the Setting the Real-Time Clock section of this manual.

DATA FIELD PROGRAMMING FORM

Entries apply to the VISTA-21iPLTE/V21SIALTE controls, except where noted, certain fields have special settings for use with SIA installations (indicated by **V21SIALTE** with heavy borders and reverse type throughout for easy identification).

Entry of a number other than one specified will give unpredictable results. Values shown in brackets are factory defaults.

SIA Guidelines: Notes in certain fields give instructions for programming the standard VISTA-21iPLTE for False Alarm Reduction.

IMPORTANT! Make sure the Real-Time Clock is set before the end of the installation.

SIA Installations: The VISTA-21iPLTE/V21SIALTE is a certified SIA-compliant control that meets SIA specifications for False Alarm Reduction. To program for False Alarm Reduction, follow the SIA Guidelines noted in the applicable programming fields.

***20 Installer Code** [4112]

4 digits, 0000-9999
For security purposes, the factory default installer code should be changed.

***21 Quick Arm Enable** [0,0]

0 = no; 1 = yes Part. 1 Part.2

***22 RF Jam Option** [0]

0 = no RF Jam detection; 1 = send RF Jam report
UL: must be 1 if wireless devices are used

***23 Quick (Forced) Bypass** [0,0]

0 = no quick bypass **UL:** must be "0" Part. 1 Part. 2
1 = allow quick bypass (code + [6] + [#])

***24 RF House ID Code** [00,00,00]

00 = disable all wireless keypad usage Part. 1 Part. 2 Common
01-31 = using 5828 keypad

***26 Chime By Zone / KP Sound Enables** [6, 7]

1 2
For each entry, enter the sum of the desired options. Example Entry 1: for Chime by Zone and System Low Battery sounding, enter 5. To enable all options, enter 7.

Entry 1
0 = no "entry 1" keypad trouble sounds, AND no chime by zone (keypad chimes on fault of any entry/exit or perimeter zone when chime mode is on)
1 = Chime by Zone enabled
2 = Communication Device (LRR) trouble sounding enabled (if LTE-21V module installed)
4 = System Low Battery sounding enabled
7 = select all entry 1 options

Entry 2
0 = no "entry 2" keypad trouble sounds
1 = RF Supervision sounding enabled
2 = RF Low Battery sounding enabled
4 = RF Jam sounding enabled
7 = select all entry 2 options

***29 Menu Mode for IP/Cell Enable**

This is a Menu Mode command, not a data field, for programming IP/Cell options. See respective section later in this document.

***31 Single Alarm Sounding Per Zone** [0]

0 = unlimited sounding (bell output); 1 = one alarm sounding per zone

V21SIALTE: If "0" selected, "alarm sounding per zone" will be the same as the "number of reports in armed period" set in field *93 (1 if one report, 2 if 2 reports, unlimited for zones in zone list 7).

***32 Fire Alarm Sounder Timeout** [0]

0 = sound stops at timeout; 1 = no timeout **UL:** must be "1" for fire install

***33 Alarm Sounder (Bell) Timeout** [1]

0 = none; 1 = 4 min; 2 = 8 min; 3 = 12 min; 4 = 16 min
UL: For residential fire alarm installation, must be set for a minimum of 4 min (option 1); for UL Commercial Burglary installations, must be minimum 16 min (option 4)

***34 Exit Delay** [60,60]

00 - 96 = 0 - 96 secs; 97 = 120 secs Part. 1 Part. 2
UL: see inst. instr. for requirements. Common zones use part. 1 delay.
SIA Guidelines: Minimum exit delay is 45 seconds

V21SIALTE: 45 - 96 = 45 - 96 secs; 97 = 120 secs
NOTE: Entries less than 45 will result in a 45-second delay.

***35 Entry Delay #1** [30,30]

Common zones use same delay as partition 1. Part. 1 Part. 2
00 - 96 = 0 - 96 seconds; 97 = 120 secs; 98 = 180 secs; 99 = 240 secs
SIA Guidelines: Minimum entry delay is 30 seconds.

V21SIALTE:
30-96 = 30 - 96 secs; 97 = 120 secs; 98 = 180 secs; 99 = 240 secs
NOTE: Entries less than 30 will result in a 30-second delay.

For UL Residential Burglary Alarm installations, must be set for a maximum of 30 seconds; entry delay plus dial delay should not exceed 1 min. For UL Commercial Burglar Alarm, total entry delay may not exceed 45 seconds.

***36 Entry Delay #2** [30,30]

See *35 Entry Delay 1 for entries. Part. 1 Part. 2

***37 Audible Exit Warning** [1,1]

0 = no; 1 = yes Part. 1 Part. 2
SIA Guidelines: Must be enabled.

V21SIALTE: Feature always enabled; field does not exist.

***38 Confirmation Of Arming Ding** [0,0]

0 = no; 1 = yes (wired keypads and RF) Part. 1 Part. 2
2 = yes, RF only (except 5827/5827BD)
UL: must be "1" for UL Commercial Burglar Alarm inst.
SIA: Must be enabled with a 2, 2.

***39 Power Up In Previous State** [1]

0 = no, always power up disarmed; 1 = yes, power up in previous state
UL: must be "1" and SIA Guidelines: must be a 1.

V21SIALTE: Feature always enabled; field does not exist.

DIALER PROGRAMMING (*40 - *42)

Do not fill unused spaces. Enter 0-9; #+11 for '*'; #+12 for '#'; #+13 for a 2-second pause. If fewer than the maximum digits entered, exit the field by pressing [*]. The next data field number is displayed.

***40 PABX Access Code or Call Waiting Disable**

Enter up to 6 digits. To clear entries, press *40*. If call waiting is used, enter call waiting disable digits "*" (#+11) 70" plus "# + 13" (pause).
NOTES: 1. The call waiting disable feature cannot be used on a PABX line.
2. Using Call Waiting Disable on a non-call waiting line will prevent successful communication to the central station.

V21SIALTE: If call waiting is used, enter call waiting disable digits as described above, and also set Call Waiting Disable option in field *91.

***41 Primary Phone No.**

***42 Secondary Phone No.**

Enter up to 20 digits. To clear entries, press *41* or *42* respectively.

NOTE: For fields *43 thru *46: Enter 0-9; #+11 for B; #+12 for C; #+13 for D; #+14 for E; #+15 for F. Enter [*] as the fourth digit if a 3-digit account number (for 3+1 dialer reporting format) is used. Enter 0 as the first digit of a 4-digit account number for Nos. 0000-0999. Exit field by pressing * if only 3 digits are used. E.g., For Acct. **B234**, enter: #+11 + 2 + 3 + 4

NOTES:

- Dynamic Restore applies to all zone types except Configurable Zones and Monitor Zone Type.
- The number of times a zone can generate an alarm is controlled by the following four data fields:

Field	Title	Program Values to allow unlimited alarms
*31	Single Alarm Sounding per zone	Set to 0 - Unlimited
*50	Burglary Dialer Delay	Must be 0 (No dialer delay), or multiple faults during Dialer Delay will be ignored.
*59	Exit error	Must be 0, or multiple faults will not occur within 2 minutes of arming on Delay zones and Interior Followers.
*93	Reports per Armed period	Set to 0 - Unlimited reports

***71** **Trouble Restore Rpt Code** [00]

***72** **Bypass Restore Rpt Code** [00]

***73** **AC Restore Rpt Code** [00]

***74** **Low Bat Restore Rpt Code** [00]

***75** **RF Trans. Lo Bat Rst Rpt Code** [00]

UL: must be enabled if wireless devices are used

***76** **Test Restore Rpt Code** [00]

OUTPUT AND SYSTEM SETUP (*77 – *93)

***77** **Daylight Saving Time** [3][11]

Start/End Month

0 = Disabled
1-12 = January-September (1 = Jan, 2 = Feb, etc)
#+10 = October; #+11 = November; #+12 = December

***78** **Daylight Saving Time** [2][1]

Start/End Weekend

0 = disabled; 1 = first; 2 = second; 3 = third; 4 = fourth;
5 = last; 6 = next to last; 7 = third to last

***79, *80, *81, *82 Menu Modes**
These are Menu Mode commands, not data fields, for Output Device Mapping, Output Programming, Zone List Programming, and Alpha Programming.

***84** **Auto Stay Arm** [3]

0 = no; 1 = partition 1 only; 2 = partition 2 only; 3 = both partitions

***85** **Cross Zone Timer** [0]

[This option not for use in UL installations.]
(assign cross zones on zone list 4, using *81 Menu mode)

0 = 15 seconds	6 = 2-1/2 min	#+12 = 8 min
1 = 30 seconds	7 = 3 min	#+13 = 10 min
2 = 45 seconds	8 = 4 min	#+14 = 12 min
3 = 60 seconds	9 = 5 min	#+15 = 15 min
4 = 90 seconds	#+10 = 6 min	
5 = 2 minutes	#+11 = 7 min	

NOTE: Cross zoning takes effect only after Exit Delay expires.

***86** **Cancel Verify Keypad Display** [1]

0 = no "alarm canceled" display
1 = display "Alarm Canceled" when system is disarmed after an alarm has occurred. (To clear the "ALARM CANCELED" display, the user must enter the security code + OFF again.)

NOTE: Applies only when the Dialer is selected as the primary communication path (*55 = 0).

***87** **Misc. Fault Delay Time** [0]

(used with Configurable Zone Types "digit 6")
0 = 15 seconds 6 = 2-1/2 min #+12 = 8 min
1 = 30 seconds 7 = 3 min #+13 = 10 min
2 = 45 seconds 8 = 4 min #+14 = 12 min
3 = 60 seconds 9 = 5 min #+15 = 15 min
4 = 90 seconds #+10 = 6 min
5 = 2 minutes #+11 = 7 min

UL: may only be used on non-burglar alarm/ non-fire alarm zones when used in fire and/or UL burglar alarm installation

***88** **Program Mode Lockout Options** [0]

0 = standard *98 installer code lockout (reentry only by [*] + [#] within 50 seconds after power up)
1 = lockout [*] + [#] reentry after *98 exit (reenter via installer code or downloader only)
2 = lockout local programming after *98 exit (reenter by downloader only)

***89** **Event Log Full Report Code** [00]

See box above field *59 for report code entries.

***90** **Event Log Enables** [3]

NOTE: System messages are logged when any non-zero entry is made.
0 = None
1 = Alarm/Alarm Restore
2 = Trouble/Trouble Restore
4 = Bypass/Bypass Restore
8 = Open/Close. *Example:* To select "Alarm/Alarm Restore", and "Open/Close", enter 9 (1 + 8); To select all, enter #15.

***91** **Option Selection** [8, 0]

Entry 1 Options Options **V21SIALTE**
0 = None Call Wait Disable
1 = Bell Supervision Processing
4 = AAV

UL: must use ADEMCO UVCN module or Honeywell Home AVS

system

8 = Exit Delay Restart/Reset UL: must be disabled

"Exit Delay Restart/Reset" option allows use of the [*] key to restart the exit delay at any time when the system is armed STAY or INSTANT. This feature also enables automatic exit delay reset, which resets exit delay if the entry/exit door is re-opened and closed before exit delay time expires after arming AWAY. Automatic Exit Delay Reset occurs only once during an armed AWAY period.

SIA Guidelines: Exit Delay should be enabled.
#+12 = AAV and Exit Delay Restart/Reset

IMPORTANT: AAV should not be used when Paging or Alarm Reports are sent to a secondary number unless the monitoring zone option is used (which pauses calls). Otherwise, the call to the secondary number by the communicator after the alarm report will prevent the AAV from taking control of the telephone line, and the AAV "Listen in" session cannot take place.

V21SIALTE:
Entry 1 Options: Same as above.
Entry 2 Call Waiting Disable:
0 = call waiting not used
1 = use call waiting disable digits (*70) entered in field *40; (when selected, the system dials the entry in *40 only on alternate dial attempts; this allows proper dialing in case call waiting service is later canceled by the user).

***92** **Phone Line Monitor Enable** [0,0]

UL: see Inst. Instructions for requirements

1 2

Entry 1: 0 = disabled, 1-15 = 1 min - 15 min
(#+10 = 10 min; #+11 = 11 min; #+12 = 12 min; #+13 = 13 min; #+14 = 14 min; #+15 = 15 min)

Entry 2:
0 = Keypad display when line is faulted
1 = Keypad display plus keypad trouble sound
2 = Same as "1", plus programmed output device STARTS. If either partition is armed, external sounder activates also.
NOTE: If "2" selected, Output Device must either be programmed to be STOPPED in field *80 or STOPPED by Code + # + 8 + output number.

***93** **Reports In Armed Period** [1,0]

Per Zone (Swinger Suppression) Restrict **V21SIALTE**
Restrict Report Pairs: Report Pairs Unlimited report enabled
0 = Unlimited Reports
1 = 1 report pair
2 = 2 report pairs SIA Guidelines: Must be set for option 2.

V21SIALTE:
Restrict Report Pairs: 1 = 1 report pair; [2 = 2 report pairs]
Unlimited Reports Enable:
0 = restrict reports to the setting in entry 1
1 = unlimited reports for zones listed in zone list 7; (use zone list 7 to enter those zones that require unlimited reporting; these zones ignore the setting in entry 1)

DOWNLOAD INFORMATION (*94, *95)

***94** **Download Phone No.**

Enter up to 20 digits, 0-9; #+11 for '*'; #+12 for '#'; #+13 for a 2-second pause. Do not fill unused spaces. If fewer than 20 digits, exit field by pressing *. To clear entries from field, press *94*.

UL: downloading may be performed only if a technician is at the site. Up/downloading via the Internet has not been evaluated by UL.

***95 Ring Count For Downloading** [15]

0 = Disable Station Initiated Download;
1-14 = number of rings (1-9, # +10 =10, # +11 =11,
+12 =12, # +13 =13, # +14 =14);
15 = answering machine defeat (# +15 =15).

***96 *97 Initialize/Reset Defaults**
This is a command, not a data field. See page 2.

***98 *99 Exit Commands**
This is a command, not a data field. See page 2.

PAGER OPTIONS (*160- *172)

***160 Pager 1 Phone No.**

Enter up to 20 digits. 0-9; #+11 = '*'; #+12 = '#'; #+13 = 2-sec pause

***161 Pager 1 Characters**

Enter the optional prefix characters, up to 16 digits.
0-9; #+11 = '*'; #+12 = '#'; #+13 = 2-second pause.

***162 Pager 1 Report Options** [0,0,0]

For each partition, select from the following: P1 P2 common
0 = no reports sent
1 = Opens/closes all users
4 = All alarms and troubles
5 = All alarms / troubles, and opens/closes for all users
12 = Alarms / troubles for zones entered in zone list 9
13 = Alarms / troubles for zones entered in zone list 9, and
opens/closes for all users

***163 Pager 2 Phone No.**

Enter up to 20 digits. 0-9; #+11 = 'Q'; #+12 = '#'; #+13 = 2-sec pause

***164 Pager 2 Characters**

Enter the optional prefix characters, up to 16 digits.
0-9; #+11 = '*'; #+12 = '#'; #+13 = 2-second pause.

***165 Pager 2 Report Options** [0,0,0]

See field *162 for reporting options. Select for each partition (use
zone list 10 if using options 12 or 13).

***166 Pager 3 Phone No.**

Enter up to 20 digits. 0-9; #+11 = '*'; #+12 = '#'; #+13 = 2-sec pause

***167 Pager 3 Characters**

Enter the optional prefix characters, up to 16 digits.
0-9; #+11 = '*'; #+12 = '#'; #+13 = 2-second pause.

***168 Pager 3 Report Options** [0,0,0]

See field *162 for reporting options. Select for each partition (use
zone list 11 if using options 12 or 13).

***169 Pager 4 Phone No.**

Enter up to 20 digits. 0-9; #+11 = '*'; #+12 = '#'; #+13 = 2-sec pause

***170 Pager 4 Characters**

Enter the optional prefix characters, up to 16 digits.
0-9; #+11 = '*'; #+12 = '#'; #+13 = 2-second pause.

***171 Pager 4 Report Options** [0,0,0]

See field *162 for reporting options. Select for each partition (use
zone list 12 if using options 12 or 13).

***172 Pager Delay Option For Alarms** [3]

0 = none; 1 = 1 minute; 2 = 2 minutes; 3 = 3 minutes
This delay is for ALL pagers in the system.

MISCELLANEOUS SYSTEM FIELDS (*174-*181)

***174 Clean Me Reporting Options** [0]

(for ESL smoke detectors)
0 = disable; 1 = Clean Me signal reports;
NOTE: If Clean Me is enabled, you must enter "3" in field Q56
programming for zone 1 response time.

***177 Device Duration 1, 2** [0] [0]

(used in *80 Menu mode-Device Actions 5/6)
0 = 15 seconds 6 = 2-1/2 min #+11 = 7 min 1 2
1 = 30 seconds 7 = 3 min #+12 = 8 min
2 = 45 seconds 8 = 4 min #+13 = 10 min
3 = 60 seconds 9 = 5 min #+14 = 12 min
4 = 90 seconds #+10 = 6 min #+15 = 15 min
5 = 2 minutes

***181 50/60 Hertz AC Operation** [0]

0 = 60 Hz; 1 = 50 Hz

CONFIGURABLE ZONE TYPE OPTIONS (*182-*185)
(see Configurable Zone Type Worksheet on page 15)

***182 Configurable Zone Type 90**

1 2 3 4 5 6 7 8 9 10

Enter the appropriate value for each entry, 1-10, based on the charts
provided on the next page. Each entry is the sum of the values of its
selected options
(0-9, #+10=10, #+11=11, #+12=12, #+13=13, #+14=14, #+15=15).

UL: Do not configure zones as a fire alarm or UL burglar alarm
zone.

***183 Zone Type 90 Report Codes**

IMPORTANT: Use existing Contact ID® codes, if appropriate, or
define unique codes in CID code range 750-789. See important note
in installation instructions.

90 ALARM ID: XXX
TROUBLE ID: XXX

Enter the desired 3-digit Contact ID® report codes for alarms and
troubles occurring on zones assigned to this zone type. Enter the
codes sequentially (all 6 digits). When entering digits, [#] moves
cursor back, [*] moves forward.

NOTE: Zone alarm report codes (prompt in *56 Menu mode) and
trouble report code (*60) and relevant restore codes (*70, *71) must
be enabled in order for the configurable zone type codes to be
reported.

Press [*] when done to continue.

***184 Configurable Zone Type 91**

1 2 3 4 5 6 7 8 9 10

See *182 for entries. Press [*] when done to continue.

UL: Do not configure zones as a fire alarm or UL burglar alarm
zone.

***185 Zone Type 91 Report Codes**

IMPORTANT: Use existing Contact ID® codes, if appropriate, or
define unique codes in CID code range 750-789. See important note
in installation instructions.

91 ALARM ID: XXX
TROUBLE ID: XXX

See *183 for entries. Press [*] when done to continue.

*188 Keypad Lockout

[1]

0 = disable
1 = enable

Alpha keypad display:
Line 1 "User Code Error;"
Line 2 "Keys 0-9 Locked"

Fixed Glass keypad display:
"CE" (Code Error)

If enabled:

- The system locks out the keypad for 15 minutes if 30 keystrokes are made without a valid user code being detected. (30 keystrokes = 6 attempts of code + command)
- While locked out, the message "User Code Error" is displayed on alpha keypads in the partition that is locked out.
- Upon lockout, a message is transmitted to the central station (Contact ID event 461 Wrong Code Entry), as well as being logged in the event log.
- When the 15-minute lockout window expires, a Restore message is sent to the Central Station and entered into the Event Log.
- Lockout period ends and the display clears when lockout time expires, or an alarm occurs, or entry delay begins.

If disabled:

- "Wrong Code Entry" (event 461) message is added to Event Log.
- No report is sent to the central station.
- No message is displayed on the keypad.
- No restore event is entered in the event log.

KEYPAD OPTIONS *189-*196

KEYPAD NOTES:

1. Options for keypad 1, address 16 are set by the factory and cannot be changed.
2. Each keypad must be assigned a unique address. Keypads programmed with the same address will give unpredictable results.
3. If using Remote Services (IP/Cell feature), one of the keypad addresses may be used for limited Remote Services features, though a physical keypad is not installed. See *29 Menu Mode section for enabling Remote Services.

*189 Touch Screen Device

(AUI) Enable [1] [1] [0] [0] AUI 1 AUI 2 AUI 3 AUI 4
System supports up to four touch screen style keypads (e.g., Symphony Advanced User Interface, and 6270 Touch Screen Keypad).

AUI Compatibility Note: To ensure proper AUI device operation, use AUI devices with the following rev levels: 6270 series use version 1.0.9 or higher; 8132/8142 (Symphony) series use version 1.1.175 or higher.

Device Addresses:

Touchscreen device 1: Must set to 1
Touchscreen device 2: Must set to 2
Touchscreen device 3: Must set to 5
Touchscreen device 4: Must set to 6

Enter each touch screen keypad's home partition option 0-7:

For Touchscreen device usage

0 = disable
1 = partition 1
2 = partition 2
3 = partition 3 (common)

For Remote Services device usage

5 = part. 1 (auto-stay arm disabled)
6 = part. 2 (auto-stay arm disabled)
7 = part. 3 (common; auto-stay arm disabled)

Note for Remote Services Devices: If using the Remote Services feature of the communication device, select an option 5-7, depending on the partition the Remote Services device is associated with (these options automatically disable auto-stay arming when the system is armed from the respective Remote Services device). By default, the Total Connect (virtual) keypad will be set to address 2 in the communicator programming. To avoid a "Setup/Programming" error message, when installing this system for use with Total Connect 2.0, the suggested input of 1,5,0,0 assumes this programming has been left at default and assumes you have a touchscreen keypad installed for partition 1 at address 1.

Refer to the communication device's installation instructions for details on enabling the Remote Services feature.

Remote Services Device Address: Using an AUI device address for Remote Services provides enhanced remote services features, but an actual AUI device cannot use the same address. If no AUI addresses are available (all four AUIs are being used), Total Connect 2 cannot be used for remote services. However, Total Connect 1 can be used by choosing an available standard keypad address and using the appropriate keypad address field *190 - *196 to select the Remote Services operating partition (some remote access features will be unavailable).

NOTES:

1. Use of touch screen style keypads does not affect the number of standard keypads supported.
2. If using Remote Services (IP/Cell feature), one of the touch screen (AUI) addresses may be used for enhanced Remote Services feature set, though a physical touch screen is not installed. See *29 Menu Mode section for enabling

Remote Services

*190 Keypad 2 Device Address 17

[1] [0]

Entry 1: Partition/ Enable

For Standard Keypad usage

0 = disable
1 = partition 1
2 = partition 2
3 = partition 3 (common)

For Remote Services device usage (see note below)

5 = partition. 1 (auto-stay arm disabled)
6 = partition 2 (auto-stay arm disabled)
7 = partition 3 (common; auto-stay arm disabled)

Entry 2: Keypad Sounds

(for system trouble sound options, see *26)

0 = no suppression
1 = suppress arm/disarm and Entry/Exit beeps
2 = suppress chime beeps only
3 = suppress arm/disarm, Entry/Exit, and chime beeps

Note for Remote Services Devices: If using the Remote Services feature of the communication device, select an option 5-7, depending on the partition the Remote Services device is associated with (these options automatically disable auto-stay arming when the system is armed from the respective Remote Services device). Refer to the communication device's installation instructions for details on enabling the Remote Services feature.

*191 Keypad 3 Device Address 18

[1] [0]

See field *190 for entries.

Partition Sound

*192 Keypad 4 Device Address 19

[1] [0]

See field *190 for entries.

Partition Sound

*193 Keypad 5 Device Address 20

[1] [0]

See field *190 for entries.

Partition Sound

*194 Keypad 6 Device Address 21

[1] [0]

See field *190 for entries.

Partition Sound

*195 Keypad 7 Device Address 22

[1] [0]

See field *190 for entries.

Partition Sound

*196 Keypad 8 Device Address 23

[1] [0]

See field *190 for entries.

Partition Sound

*197 Exit Time Display Interval

[0]

0 = no display; 1-5 = seconds between display refresh

NOTE: If enabled and using only 2-digit fixed-word keypads (e.g., 6150RF), do not set exit delay time greater than 96 seconds. See Inst. Instr. for explanation.

TOUCH SCREEN DEVICE NOTE: If using more than one touch screen device (e.g., 6280, TUXEDO) with the system, leave field *197 Exit Time Display Interval set to the default value "0." The 6280 automatically displays remaining exit time in one-second increments.

*198 Display Partition Number

[0]

(for Alpha Display Keypads)

0 = no; 1 = yes (partition no. appears on Alpha Display)

*199 ECP Fail Display

[0]

0 = 3-digit display ("1" + device address)

1 = 2-digit fixed-display as "91"

*29 INTERNAL DEVICE MENU MODE (for Programming IP and Cell Module Options)

This mode programs the Internet connection (IP) and LTE-21V Module configuration, collectively referred to as the Internal Device.
NOTE: The Internal Device is automatically set to address 3 and cannot be changed.

IMPORTANT: The use of the IP connection or the LTE-21V module requires an AlarmNet-I account. Please obtain the account information from the central station prior to programming this module.

The following section describes the programming of the internal device options using an alpha keypad. Alternatively, these options can be programmed via the AlarmNet 360 website. After programming is complete, **the control must be registered** with AlarmNet (via the control's RJ45 Internet connection). Refer to the Registration with AlarmNet section for procedures.

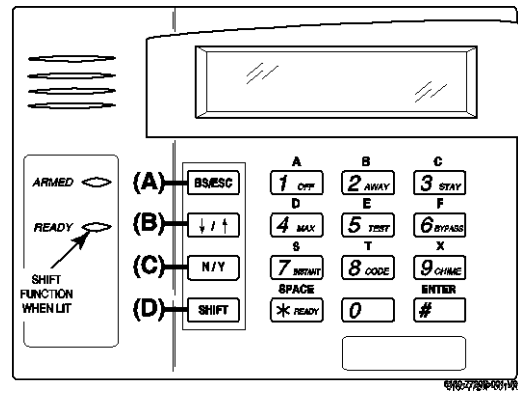
Using an Alpha Keypad as a 7720P Programming Tool

When programming IP/Cell features (with *29 menu mode), the alpha keypad mimics the functions of the 7720P Programming Tool. See figure at right and table below for 7720P key functions. Each key has two possible functions: a normal function and a SHIFT function.

Normal functions: The numeric values labeled directly on the keys and the left-hand functions shown in diagram on the ABC keys. To perform a normal key function, simply press the desired key.

SHIFT functions: Those functions shown in diagram above the numerical keys and the right-hand functions shown on the ABC keys. To perform a SHIFT key function, press SHIFT key (D key), then press the desired function key (shift function is indicated by the lit READY LED).

7720P Emulation Template for Alpha Keypads



Normal and SHIFT Key Functions While in *29 Menu Mode

Key	Normal Key Function	SHIFT Key Function
(A) = BS/ESC	[BS]: Press to delete entry Also, can reset EEPROM defaults †	[ESC]: Press to quit Program Mode
(B) = ↓/↑	[↓]: Scroll down programming	[↑]: Scroll up programming
(C) = N/Y	[N]: Press for "NO" answer	[Y]: Press SHIFT-Y for "YES" answer
(D) = SHIFT	Press before pressing a SHIFT key function. Will light READY LED. LED goes out once a key is pressed. Press again for each SHIFT function desired.	
1/A	[1]: For entering the number 1	[A]: Used for entering C.S. ID number
2/B	[2]: For entering the number 2	[B]: Used for entering C.S. ID number
3/C	[3]: For entering the number 3	[C]: Used for entering C.S. ID number
4/D	[4]: For entering the number 4	[D]: Used for entering C.S. ID number
5/E	[5]: For entering the number 5	[E]: Used for entering C.S. ID number
6/F	[6]: For entering the number 6	[F]: Used for entering C.S. ID number
7/S	[7]: For entering the number 7	[S]: Press to display diagnostic status
8/T	[8]: For entering the number 8	[T]: Press to send TEST messages
9/X	[9]: For entering the number 9	[X]: Press to reset the IP/Cell
[*] / SPACE	[*]: Used to select programming options	[SPACE]: Not used
0	[0]: For entering the number 0	
[#] / ENTER	[#] / ENTER: Press to accept entries	No SHIFT function

† Active only when the "REVIEW?" prompt is displayed

INTERNAL DEVICE (IP AND CELL) DEFAULT VALUES

	OPTION	STANDARD DEFAULT VALUE	ACTUAL ENTRY
1	Internal Device	IP	
2	Multi-Mode	Disabled	
3	Multi-Mode Address	?? (if Multi-Mode enabled)	
4	Primary City ID	??	
5	Primary CS ID	??	
6	Primary Sub ID	????	
7	Remote Access	N	
8	Keypad Address (for Remote Access)	?? (if Remote Access enabled)	
9	Supervision	24 Hours	
10	Cell Rollover Y/N	N (if Cell enabled)	
11	Cell 24Hr Tst Y/N	N (if Cell enabled)	
12	Old Alarm Time	10 Minutes	
13	IP Fault Time	00 Minutes	
14	Cell Fault Time	00 Minutes (if Cell enabled)	
15	Notify Panel Of	Neither Fault (if IP and Cell enabled)	
16	Use DHCP Y/N	Y (if IP or IP/ Cell enabled)	
17	NIC IP Address	255.255.255.255 (if DHCP not used)	
18	Subnet Mask	255.255.255.255 (if DHCP not used)	
19	Gateway IP Addr	255.255.255.255 (if DHCP not used)	
20	DNS IP Addr.	255.255.255.255 (if DHCP not used)	

Status and Contact ID Reporting Codes

The Internal Device (IP/Cell) sends status messages to the control panel for network connectivity failures. Trouble messages are displayed on the keypad as "Check 103," with status displayed as "LNgRng Radio" followed by a 4-digit keypad display status code, defined below.

Keypad Display Status Codes When "CHECK 103" is Displayed

CODE	DESCRIPTION
0000	Control panel lost communication with internal device
0005	internal device has lost contact with AlarmNet network
000F	internal device is not registered; account not activated
0019	Cell module shut down
0400	internal device Power-on reset

Contact ID Codes (as displayed at 685) sent to CS via IP/Cell

CODE	DESCRIPTION
E339 C803	Power-on reset
E350 C951	Primary communication path failure (Ethernet)**
R350 R951	Primary communication path restore (Ethernet)**
E350 C952	Secondary communication path failure (Cell)**
R350 C952	Secondary communication path restore (Cell)**
E355 C000	Module lost ECP communication with control
R355 C000	Module restore ECP communication with control
E353 C103	Long range transmitter fault trouble
R353 C103	Long range transmitter fault restore
E359 C950	Communication Failure
R359 C950	Communication Failure Restore
E365 C0803	Module Firmware Update Success
E366 C0803	Module Firmware Update Failure
R903 C0803	Application Code Update Success
E904 C0803	Application Code Update Failure

** reports only if IP and Cell enabled

Using *29 Menu Mode to Program IP/Cell Options

Press *29 while in Data Field Programming mode. See the following prompts.

Note for remote services:

When installing this system for use with Total Connect 2.0, DO NOT USE *29 PROGRAMMING TO FULLY PROGRAM THE COMMUNICATOR to avoid overwriting any Total Connect settings that may have been previously programmed. Enter 1 to enable IP/Cell, then the star key (*). If you are installing this system with an IP connection, press 0 to exit field *29 programming. If you are installing this system with LTE-21V only (no IP connection), press 1 to enter program mode and toggle the Internal Device option to Cell only. Then exit *29 programming by pressing 0.

Enable INT IP/Cell?

0 = No, not using either IP or Cell; 1 = Yes, using IP and/or Cell module [*] to continue. **NOTE:** Default = 1 (IP and/or Cell)

IMPORTANT: If using an external communication device, see the **LTE-21V Module Installation** section of the Installation and Setup Guide (**Inadequate Signal Quality** paragraph) for physical installation of an external communication device. When complete, enter 1 at this prompt and enter 1-Prog at the next prompt. Then program the external device using the Installation and Setup Guide included with the external communication device.

Note for remote services: If using an IP connection, enable the IP/Cell option, press the star key [*] to continue and 0 to exit *29 programming menu. DO NOT FULLY ENTER *29 MENU MODE. Next, program *189 (See *189 for more information).

Fixed-Word Keypad Note: Although programming IP/Cell options cannot be done via a fixed-word keypad, IP/Cell can be enabled by doing the following: Enter *29 (to enter IP/Cell menu mode), then press 1 + [*] + [*]

Programming/Diagnostics Select

1 = Prog (program the IP/Cell options)
2 = Diag (enter diagnostic mode)
0 = Quit; return to data field programming mode

Internal Device Programming Prompts

The keys used to select and enter options now follow 7720P keypad emulation. Refer to the table on the previous page for detailed key functions.

- [*] = scroll the options of a particular prompt
- [#] = accept the entry and move to the next prompt
- [A] = backspace or shift-[A] for escape
- [B] = scroll to next prompt or shift-[B] scroll to previous prompt
- [C] = answer No or shift-[C] answer Yes to prompt
- [D] = shift key

Internal Device Selection

Select the type of IP and/or Cell module usage (press [*] to scroll choices): Disabled (none); IP only; Cell module only; IP & Cell

NOTE: If reconfiguring from IP only to Cell only via the 7720P (or the panel keypad) a "Forced Server Update" is required. Exiting programming causes the device to reset, once reset press [0] via the 7720P (or the panel keypad). Or, from AN 360, perform a "Get Data" command.

Note for remote services and the LTE-21V: If you are installing this system with LTE-21V only (no IP connection), toggle the Internal Device option to Cell only, then exit programming as follows without entering the Primary City ID at the next prompt: After toggling to Cell Only: select Function Key D, then Function Key A, then select the pound key (#) to exit at the **Review? Y/N** prompt. [#] to continue

Multi-Mode (email reporting)

This feature is available only after authorization for it is set via the web-based programming tool on the AlarmNet 360 website.

Multi-mode emulates 4204 Relay Module outputs to send up to four (4204 sourced) or up to eight (2-4204 sourced) reports of system events to the user via email (email address is entered at the AlarmNet 360 website). Use the AlarmNet 360 website to customize event titles, if desired. If enabled, a multi-mode address must be entered in the next prompt.

Use *79/*80 Menu modes to program each emulated output to trigger a desired system event that, upon occurrence, will be sent to the user's email address.

Select the desired multi mode option:

- Disabled = no email reporting of events
- 4204 Sourced = up to four types of events reported (relay numbers 1-4 report as events 1-4 respectively)
- 2-4204 Sourced = up to eight types of events reported (first module's relay numbers 1-4 report as events 1-4 respectively; second module's relay numbers 1-4 report as events 5-8 respectively)

Enhanced Reports = Enables full panel status reporting via email and reporting to TC2 web services. If used, RIS must be enabled in field *91; when enabled, address 25 is automatically assigned.

[*] key scrolls forward; [backspace] key scrolls backward; [#] to continue

NOTES:

1. Multi-mode has not been evaluated by UL.
2. Multi-mode (email notification) is intended as a convenience for the user, and does not replace Central Station reporting of critical events (alarms, troubles, etc.).

Multi-Mode Address

This prompt appears if Multi Mode is enabled
12-15 =emulated 4204 Relay Module address

25 = automatically assigned if Enhanced Reports selected

If using "2-4204-sourced," the address of the second module is automatically assigned an address one higher than the first module's address.

NOTE: A 4204 Relay module address is required for multi-mode purposes, but an actual 4204 Relay module is not used at the selected address.

Primary City ID

NOTE: Account information is provided by the central station administrator.
01-99 (decimal) = 2-digit primary city code

Primary CS ID

Enter the primary central station's system ID number, 01-FE (HEX)

Primary Sub ID

Enter the 4-digit customer account number, 0001-9999 (decimal).

Remote Access

This feature is available only after authorization for it is set via the web-based programming tool on the AlarmNet 360 website.

Remote Services allow the end user to access their security system from a computer via the remote services website. Most system functions can then be performed.

[Y] = use remote services; [N] = do not use remote services; [#] to continue.

Keypad Address (for Remote Access)

This prompt appears if remote access is enabled. By default, the Total Connect (virtual) keypad will be set to address 2. To avoid a "Setup/Programming Error" message, when installing this system for use with Total Connect 2.0, see *189 for more information.

For enhanced remote access features, choose an AUI address. If no AUI addresses are available (all four AUIs are being used), choose an available standard keypad address (some remote access features will be unavailable).

1, 2, 5, 6 = emulated AUI address

17-23 = emulated standard keypad address

NOTE: An AUI or standard keypad address is required for remote access purposes, but an actual AUI device or keypad is not used at the selected address.

Supervision

The supervising station must hear from the IP/Cell at least once during the supervision period. AlarmNet transmits a communications failure alarm to the central station if the supervision message is not received within the period.

This selection sets the supervision timing for one of the following values:

- | <u>if using IP and/or Cell</u> | <u>if using IP only (not for Cell usage)</u> |
|--------------------------------|--|
| • 30 day | • 6 Min |
| • 24-hours | • 90 Sec |
| • None (no supervision) | • 3 Min |
| | • 75 Sec |
| | • 1 hour |

To scroll the choices: [*] key scrolls forward; [backspace] key scrolls backward
[#] to continue

Cell Rollover Y/N

Appears only if IP&Cell is selected as Internal Device option.

[Y] = all messages (including AlarmNet network supervisory messages) are sent over the Cell network in the event of an Internet failure

[N] = all messages (except AlarmNet network supervisory messages) are sent automatically over the Cell network in the event of an Internet failure

Cell 24Hr Tst Y/N

Appears only if IP&Cell is selected as Internal Device option.

[Y] = have a message sent once a day to verify Cell operation. A "secondary communication path loss" message is generated if the message is not successfully delivered.

[N] = disable 24hr test

Old Alarm Time

The old alarm time sets how long an undeliverable alarm is retried for delivery to AlarmNet. If the message is not validated, it is retried until the old alarm time is reached or the message is validated. The choices available are:

- 10 Minutes
- 15 Minutes
- 30 Minutes
- 1 Hour
- 2 Hours
- 4 Hours
- 8 Hours
- 12 Hours
- 24 Hours

To scroll the choices: [*] key scrolls forward; [backspace] key scrolls backward
[#] to continue

IP Fault Time

Appears only if IP or IP&Cell is selected as Internal Device option.

00-99 = time delay (in minutes) before the control notifies the central station that there is a loss of contact with the network over the Ethernet (IP) connection.

0 = no delay (valid only if using IP only)

Must be two (2) minutes for UL installations.

Cell Flt Time

Appears only if Cell or IP&Cell is selected as Internal Device option.

00-99 = time delay (in minutes) before the control notifies the central station that a loss of contact with AlarmNet network has occurred.

0 = no delay (valid only if using Cell only,

Must be two (2) minutes for UL installations.

Notify Panel Off

Appears only if IP&Cell is selected as Internal Device option.

Select from the following choices:

- Neither Fault
- Both IP and Cell must fail before fault code is sent (status code 4005 displayed); panel receives primary and secondary path failure messages. No message sent if only one or the other path fails.

To scroll the choices: [*] key scrolls forward; [backspace] key scrolls backward
[#] to continue

NOTE: IP failure will always be sent to the central station as Primary Path Failure, and Cell failure will always be sent as Secondary Path Failure.

IP address information prompts

The following prompts appear only if IP or IP&Cell is selected as Internal Device. It is recommended to use dynamically allocated IP addresses, but if fixed IP addresses are desired, contact your network administrator for the appropriate information. Note that a valid IP address must be entered in each prompt before the system continues to the next prompt. Entries cannot be left with the default values.

Use DHCP

[Y] = have the IP addresses dynamically allocated (recommended), skip to Review prompt.

[N] = use fixed IP addresses; continue with next prompt

[#] to continue

NIC IP Address [255.255.255.255]

Enter the 4-part IP address for this device, separating each part with a space ([*] key, displayed as periods). [#] to continue

Subnet Mask [255.255.255.255]

Enter the 32-bit address mask used to indicate the portion (bits) of the IP address that is being used for the subnet address, separating each part with a space ([*] key, displayed as periods). [#] to continue

Gateway IP Addr [255.255.255.255]

Enter the 4-part IP address assigned to the Gateway, separating each part with a space ([*] key, displayed as periods). If unused set to 0.0.0.0. [#] to continue

DNS IP Addr [255.255.255.255]

Enter the 4-part IP address assigned to the DNS (Domain Name System) server, separating each part with a space ([*] key, displayed as periods). If unused set to 0.0.0.0. [#] to continue

Review? (and Exit *29 Menu mode or Reset Defaults)

You can review the *29 Menu mode options to ensure that the correct entries have been made. When satisfied, select [N] to exit *29 Menu mode.

To review prompts or exit *29 Menu mode:

[Y] = review prompts and entries, starting with Internal Device. Use the up/down arrow keys to scroll through the program fields without changing any of the values. If a value requires change, simply type in the correct value. When the last field is displayed, the "REVIEW?" prompt appears.

[N] = Exit *29 menu mode and return to data field programming mode. The prompt briefly displays "DONE" before returning to data field mode prompt "Enter * or #."

[#] to accept Y or N selection (# alone exits same as N)

To reset *29 Menu mode defaults:

Press [ESC] at the Review prompt to display the "Set Defaults" prompt.

[Y] = reset *29 menu mode options to factory values; if selected, all programmed *29 Menu mode options are reset to the factory settings

[N] = cancel reset defaults function

Programming IP/Cell Options via AlarmNet 360 Website

To program the IP/Cell options via the AlarmNet 360 website (if you are already signed up for this service), go to: www.alarmnet360.com

Log in and follow the on-screen prompts.

Please have the following information available:

1. Primary City ID (two-digit number)
2. Primary Central Station ID (two-digit hexadecimal number)
3. Primary Subscriber ID (four-digit number)
4. MAC ID and MAC CRC number (located on the outside of box and on label inside module) or MIN number of the device you are replacing
5. Mode of operation of existing module if replacing a "C" series radio.

After programming is complete, you must transfer the data to the module and the module must be registered. Refer to the Registration section for details.

IP/Cell Diagnostic Commands (*29 Menu Mode)

Diagnostic commands can be used to quickly view your Internet and Cell connectivity settings and options. For each command press the [shift] key and then the designated command key. For example, press [shift] then [1/A] to display the software revision screen.

To enter Diagnostic mode:

1. Press *29 while in data field programming mode.
 2. Enter "1" at the "Enable IP/Cell" prompt then press [*].
 3. Select "2" (Diag) at the next prompt.
 4. Enter the desired command at the "Sel Key Command" prompt.
- For subsequent commands, enter the next command at the current screen.
- To exit Diagnostic mode, press ESC (shift-[A]).

Key	Prompt	Function
[A]	Internal IP/Cell x.x.xx mm/dd/yy	Software Revision "x.x.xx" indicates the installed software Revision. Mm/dd/yy indicates month, day and year of the revision.
[B]	MAC xxxxxxxxxxxx MAC CRC yyyy	MAC Address "xxxxxxxxxxxx" indicates the IP/Cell's unique identification number. Yyyy indicates the 4 digit MAC CRC needed to enroll the device in AlarmNet 360. [*] to continue to SCID.
	SCID xxxxx xxxxx xxxxx xxxxx	SCID Display Only if Cell or IP/Cell enabled. Displays the identification number assigned to the SIM card (SCID) in this device. [*] to continue to IMEI.

IP/Cell Diagnostic Commands (continued)

Key	Prompt	Function
	IMEI xxxxxxxx xxxxxx x	IMEI Display Only if Cell or IP/Cell enabled. Displays the identification number assigned to the Cell module in this device. [*] returns to MAC Address.
[C]	Mon 01 Jan 2006 05:48:39 am	Time Retrieves the current date and time from the AlarmNet network in Greenwich Mean Time (GMT). This display confirms that the module is in sync with network.
[D]	Physical Link Good/Bad	Physical Link Only if IP or IP/Cell enabled. Indicates if a physical connection to the internet is detected or not. [*] to continue to NIC IP address.
	NIC IP Address xxx.xxx.xxx.xxx	IP Information Displays Displays the device IP address . [*] to continue to subnet mask.
	Subnet Mask xxx.xxx.xxx.xxx	Displays the 32-bit address mask used to indicate the portion (bits) of the IP Address that is being used for the subnet address. [*] to continue to gateway IP.
	Gateway IP Addr xxx.xxx.xxx.xxx	Displays the IP Address assigned to the Gateway. [*] to continue to DNS server IP.
	DNS Serv IP xxx.xxx.xxx.xxx	Displays the IP Address assigned to the DNS (Domain Name System) server. [*] to continue to encryption test.
	Encryption Test AES Passed!	Performs a self-test of the AES encryption algorithm. [*] to continue to DHCP.
	DHCP OK	DHCP (Dynamic Host Configuration Protocol) OK = server performing okay. [*] returns to Physical Link prompt.

[E] LTE DISPLAYS

RAT	SigQual	REG
LTE/3G	****	X

LTE Cellular Status Display Screen 1

RAT – Radio Access Technology.
– LTE or 3G

SigQual – Signal Quality (1-5 ***)

REG – Registration status where "x" can be:

- N – Not Registered
- H – Registered Home
- S – Searching
- D – Registration Denied
- R – Registered Roaming
- ? – Unknown Registration State

If the RAT is LTE, the number of stars is derived from received power (RSRP) and the received quality (RSRQ). The lower number of stars of the two ratings is what is displayed as overall quality.

NOTE: For adequate signal strength, must be 2 stars or more.

RSRP:

Greater than -85dBm = 5 stars
-86dBm to -95dBm = 4 stars
-96dBm to -105dBm = 3 stars
-106dBm to -115dBm = 2 stars
-116dBm and lower = 1 star

RSRQ:

Greater than -10dB = 5 stars
-11dB to -12dB = 4 stars
-13dB to -14dB = 3 stars
-15dB to -16dB = 2 stars
-17dB and lower = 1 star

[*] to continue to next screen.

RAT	RSRP	RSRQ
LTE	xxxx	xxxx

Signal Display for LTE

RAT – Radio Access Technology.
 RSRP – Reference Signal Received Power
 RSRQ – Reference Signal Received Quality
 [*] to continue to next screen.

RSRP	MIN	MAX
xxxx	xxxx	xxxx

Min/Max Signal Display for LTE

RSRP – Current Reference Signal Received Power
 MIN – Minimum Receive Signal Level
 MAX – Maximum Receive Signal Level
 [*] to continue to next screen.

RSRQ	MIN	MAX
xxxx	xxxx	xxxx

Min/Max Signal Quality Display for LTE

RSRQ – Current Reference Signal Received Quality
 MIN – Minimum Receive Signal Quality
 MAX – Maximum Receive Signal Quality
 [*] to continue to next screen.

Cntry	Netw	TAC
xxx	xxx	xxxxx

Location Display for LTE

Cntry – Country Code
 Netw – Network Code
 TAC – Tracking area code
 [*] to continue to next screen.

GCell	Chan
xxxxxx	xxxx

Cell Display for LTE

GCell – Global Cell ID
 Chan – RF Channel number (EURFCN)
 [*] to continue to next screen.

Band	Mode
xxx	xxxx

LTE Status Display Screen 5

Band – LTE Band Number
 Mode – LTE Mode either FDD or TDD
 [*] to continue to next screen.

[E] Operating with 3G Service

RAT	RSCP	EC/No.
3G	-xxx	-xxxxxx

Signal Display for 3G

RAT – Radio Access Technology.
 RSCP – Received Signal Code Power
 Ec/No – Carrier Noise Ratio (CNR)
 [*] to continue to next screen.

RSCP	MIN	MAX
xxxx	xxx	xxxx

Min/Max Signal Display for LTE

RSRP – Current Reference Signal Received Power
 MIN – Minimum Receive Signal Level
 MAX – Maximum Receive Signal Level
 [*] to continue to next screen.

Cntry	Netw	LAC
xxx	xxx	xxxxx

Location Display for 3G

Cntry – Country Code
 Netw – Network Code
 LAC – Local area code
 [*] to continue to next screen.

Cell	Chan	PSC
xxxxxx	xxxx	xxx

Cell Display for 3G

Cell – Global Cell ID
 Chan – Control Channel in use
 PSC – Primary Sync Code
 [*] to continue to next screen.

Second Site RSSI Available

3G Status Display Screen 5

Secondary Site RSSI availability. Available or Not Available will be displayed.
 [*] to continue to next screen.

IP/Cell Diagnostic Commands (continued)

Key	Prompt	Function
[F]	Testing Gateway Redir 1	Network Diagnostic Test Only if IP or IP/Cell enabled. Performs a set of network diagnostics that tests the integrity of the links between the IP/Cell and the various connection points (Redirs) to AlarmNet.
[S]	ECP OK FLT	Status request OK = normal i = IP off line l = IP fault reported g = Cell off line G = Cell fault reported
[T]	Test Msg Sent	Test Alarm Sends a Test alarm to AlarmNet. Functional for a registered IP/Cell only. If the device is not registered, a message is displayed indicating that the command cannot be executed.
[X]	Reset CPU Y/N	Reset the IP/Cell. [N] = return to diagnostic mode (blank screen = enter next command or escape). [Y] = resets the module (blank screen = when reset complete, enter next command or escape).
[↑]	Registering ...	Registration (Shift-UP arrow) Registers a programmed IP/Cell with AlarmNet. If it is configured to report to AlarmNet, the IP/Cell will register with AlarmNet.
[↓]	Enter PIN#	Registration with PIN for Replacement Module (DN arrow) Registers a programmed IP/Cell with AlarmNet if it is configured to report to AlarmNet.
[0]	Force Server Update Y/N	Force Upload of Configuration File to Server [Y] = force the device to upload its entire configuration file to the server. [N] = cancel the operation. NOTE: If the internet is not available, and the module is not initialized when you enter this command, the following screen will be displayed: <div style="border: 1px solid black; padding: 5px; width: fit-content; margin: 5px auto;"> Cannot Upload Try Later!_ </div> Wait for the Signal Quality LEDs to light, indicating initialization is complete, and try again.

Registration with AlarmNet

The control must be registered with AlarmNet before internet communication (via IP or Cell) can occur. Register the control by using one of these methods
To register, the control must be connected to the Internet.

Register with Alpha Keypad using *29 Menu mode

1. Enter *29 Menu mode, select Diagnostic mode, then press Shift then [↑] key (D key followed by the B key). The registration message is sent ("Registering" displayed) and the control waits for the acknowledgment.
2. "Registration SUCCESS" displayed, indicating successful registration.

Register with Test Switch on control's PCB (triple-click)

1. Click the switch three times.
2. Watch the Cell Status LEDs: The Message (yellow) LED and the Status (green) LED will blink slowly in unison while registration is in progress.
3. When registration is complete, the Status (green) LED goes out.

Register with AlarmNet 360 Website

To register via AlarmNet 360 Website, please go to: www.alarmnet360.com

Log in and follow the on-screen prompts.

Please have the following information available:

- Primary City ID (two-digit number provided by central station)
 - Primary Central Station ID (two-digit hexadecimal number provided by central station)
 - Primary Subscriber ID (four-digit number provided by central station)
 - MAC ID and MAC CRC number (located on outside of box and on label on control's PC board)
 - Activation ID (AID) and AID CRC numbers (found on the label on the Cell module or on its carton)
- If you are not signed up for this service, click on "Dealer Signup" from the login screen to gain access to the Honeywell Home web-based programming.

Once the control is registered, you may log out of the AlarmNet 360 website.

Register by phone

1. Call 1-800-222-6525

You will need the following information:

- MAC ID and MAC CRC number (found on the PCB label)
- Subscriber information (provided by the central station), including a city code, CSID, and a subscriber ID
- Activation ID (AID) and AID CRC numbers (found on the label on the Cell module or on its carton)

2. When instructed to do so, triple-click the Test switch to complete the registration.

IP/Cell LED Functions

IP (web) Network LED Functions

LED Color	LED	Description
Top Green	Ethernet Link/Activity	ON – link is active; OFF – no link
Middle Green	Link Speed	ON – 100 MB/S; OFF – 10 MB/S
Yellow	Network Collision	BLINK – collision detected; OFF – normal

Module Cellular Status LED

Cellular status LED is located on the module's PC board:

STATUS	BLINK PATTERN
Voice Session	Short blink every second
Data Session	Short blink every 2 seconds
Connected to Cell network	Short blink every 4 seconds
No or deactivated SIM	Long blink every second

IP/Cell Status LED Functions

LED Color	LED	Description
Green	Status	ON – control is NOT registered with AlarmNet; OFF – control is registered with AlarmNet. FAST BLINK – Download session with Compass in progress. SLOW BLINK – In unison with yellow LED – Registration in progress.
Yellow	Message	ON – Message transmission pending. QUICK PERIODIC BLINK - Normal FAST BLINK – Message waiting for network ACK. SLOW BLINK – In unison with green LED – Registration in progress.
Red	Fault	ON – No contact with network; OFF– Normal. SLOW BLINK – Loss of communication with the panel (ECP fault). FAST BLINK – No network contact AND loss of communication with the panel.
All		FAST BLINK – In unison with the Signal Quality Bar Graph LEDs – Hardware Error. Call the AlarmNet Technical Assistance Center.

Signal Strength and Status LED Meanings

Color	Label	Indication
Red	Signal Quality	ON = signal quality display OFF = status display
Yellow	mode	OFF = module operating in ECP mode
Green	mode	OFF = module operating in ECP mode
Green	Web	web connection status ON = connected to web OFF = no web connection
Green	Cell	Cell service availability ON = Cell service available FLASH = Cell in use OFF = no Cell service (messages sent via SMS)
Green	Cell	network carrier registration status ON = registered with network carrier, no second site available FLASH = registered with network carrier and second site available, excellent signal quality BLINK = registered with network carrier and second site available, acceptable signal quality SLOW BLINK = registered with network carrier and second site available, low signal quality OFF = control not registered with network carrier

Configurable Zone Types Worksheets

Configurable zone types 90 and 91 can be programmed via downloader software or from a keypad using data fields*182-*185. Configurable zone types 92 and 93 can only be programmed using the downloader software.

Programming Configurable Zone Type options involves making 10 entries in data field *182 for zone type 90 and field *184 for zone type 91, where each entry represents the sum of the values of the various options shown in the tables below. Use fields *183 and *185 to program Contact ID report codes for these zone types.

ENTRY 1 (See note 5 for RF zones)			ENTRY 2 (See note 5 for RF zones)	
Response when system disarmed and zone is:			Auto Restore	Vent Zone
Intact EOL RF zone normal	Open RF zone N/A	Shorted RF zn off-normal		
0 = normal 1 = alarm 2 = trouble 3 = fault	0 = normal 4 = alarm 8 = trouble 12 = fault	0 = normal 1 = alarm 2 = trouble 3 = fault see note 6	0 = no 4 = yes	0 = no 8 = yes
Entry 1 = EOL + Open			Entry 2 = Short + auto restore + vent zone	

ENTRY 3 (See note 5 for RF zones)			ENTRY 4 (See note 5 for RF zones)	
Response when armed STAY and zone is:			Byp. when disarmed	Byp. when armed
Intact EOL RF zone normal	Open RF zone N/A	Shorted RF zn off-normal		
0 = normal 1 = alarm 2 = trouble 3 = fault	0 = normal 4 = alarm 8 = trouble 12 = fault	0 = normal 1 = alarm 2 = trouble 3 = fault see note 6	0 = no 4 = yes	0 = no 8 = yes
Entry 3 = EOL + Open			Entry 4 = Short + byp. disarmed + byp. armed	

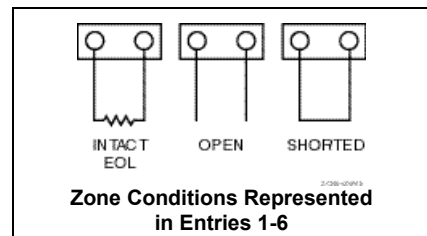
ENTRY 5 (See note 5 for RF zones)			ENTRY 6 (See note 5 for RF zones)	
Response when armed AWAY and zone is:			Dial Delay (see field *50)	Fault Delay (see field *87)
Intact EOL RF zone normal	Open RF zone N/A	Shorted RF zn off-normal		
0 = normal 1 = alarm 2 = trouble 3 = fault	0 = normal 4 = alarm 8 = trouble 12 = fault	0 = normal 1 = alarm 2 = trouble 3 = fault see note 6	0 = no 4 = use delay	0 = no 8 = use delay see note 1
Entry 5 = EOL + Open			Entry 6 = Short + dial delay + fault delay	

ENTRY 7		ENTRY 8		
Display Faults	Power Reset/ Verification	Use Entry Delay 1/2	Use Exit Delay	Respond as Interior Type
0 = show alarms when armed & disarmed 1 = don't show alarms when armed (show alarms, trbles, faults when disarmed) 3 = never show any alarms, trbles, faults	0 = no 4 = power reset after fault (by code + OFF) 12 = verification (see zone type 16)	0 = no 1 = delay 1 2 = delay 2	0 = no 4 = use exit delay	0 = no 8 = yes see note 2
Entry 7 = fault display + power reset/verification		Entry 8 = entry delay 1/entry delay 2 + exit delay + interior zone type		

ENTRY 9			ENTRY 10	
Alarm Sounds	Use Bell Timeout	Respond as Fire Zone	Trouble Sounds	Chime when Chime Mode On
0 = none 1 = steady keypad 2 = steady bell and keypad 3 = pulsing bell and keypad	0 = no 4 = yes see fields *32, *33	0 = no 8 = yes see zone type 09; see note 4	0 = none 1 = periodic beep 2 = trouble beeps	0 = no 4 = yes
Entry 9 = alarm sounds + bell timeout + fire zone			Entry 10 = trouble sounds + chime	

Entries for Fields *182 and *184		
Entry	Zone Type 90 (field *182)	Zone Type 91 (field *184)
1		
2		
3		
4		
5		
6		
7		
8		
9		
10		

To calculate the value for each entry:
Simply add the values of the selected options in each of the entry's columns (one option per column). For example, to program Entry 2 for "alarm response to short," "auto restore on," but not a "vent zone," enter 5 ("1" for alarm short + "4" for auto restore yes + "0" for vent zone no).



NOTES:

- Do not use the "fault delay" option with a configurable zone type if it is set for an entry or exit delay, otherwise unpredictable results may occur.
- To create an interior type zone, select "respond as interior zone type" (entry 8, interior type = yes), and set zone response to "fault" in entries 3-4 to ensure fault displays; do not set as "normal," "alarm," or "trouble."
- Do not set fire zones to respond as a "fault" (entries 1-6), otherwise faults will not display unless the [*] key is pressed.
- 4219/4229 modules must use EOLRs or unpredictable results may occur.
- RF Zones: The "open" option in entries 1, 3, and 5 is not applicable for RF zones. Use the "intact EOL" option for normal RF zone conditions and "shorted" for off-normal RF zone conditions.
- a. Zone-Doubling/Double-Balanced: A short on either zone of a zone-doubled pair or on a double-balanced zone causes a tamper condition.
b. For double-balanced zones, this entry must be "0."
c. For zone-doubled zones, **both** zones of the doubled pair must be assigned the same response to a short.

*56 ZONE PROGRAMMING MENU MODE

(press *56 while in Program mode)

Each protection zone needs to be programmed with various attributes using *56 Zone Programming mode or *58 Expert Programming Mode.

For each of the following prompts, make the desired entry, followed by the [*] key to accept the entry.

Refer to the Installation and Setup Guide for detailed explanations for each prompt.

SET TO CONFIRM?

0 = no; 1 = yes (See XMIT TO CONFIRM prompt later in this section.) **We recommend that you confirm the programming of every transmitter.**

ENTER ZN NUM.

01-64, 91, 92, 95, 96, 99

To quit, enter 00 to quit (returns to data field mode).

SUMMARY SCREEN:

System displays a summary of the entered zone's current programming.

Press [*] to continue.

ZONE TYPE

00 = Not used	07 = 24-Hr Audible	20 = Arm-STAY*
01 = Entry/exit #1	08 = 24-Hr Aux	21 = Arm-AWAY*
02 = Entry/exit #2	09 = Fire	22 = Disarm*
03 = Perimeter	10 = Interior w/Delay	23 = No Alarm
04 = Interior Follower	12 = Monitor Zone	24 = Silent Burglary
05 = Trouble Day/Alarm Night	14 = Carbon Monoxide	77 = Keyswitch
06 = 24-Hr Silent	16 = Fire w/Verify	81 = AAV Monitor

*5800 button-type transmitters only 90-91 = Configurable

PARTITION

1, 2, or 3-common

REPORT CODE

1-9, 10 for 0, 11 for B, 12 for C, 13 for D, 14 for E, 15 for F

For Contact ID®, enter any non-zero entry as the first digit to enable reporting for this zone.

To disable the report code for this zone, enter 00.

HARDWIRE TYPE

Appears only for zones 02-08. Zone 1 is automatically set for EOL

operation. Enter the desired hardwire type:

0 = EOL; 1 = NC; 2 = NO; 3 = zone doubling (ZD); 4 = double-balanced (DB)

RESPONSE TIME

For hardwired zones 01-08. Enter the desired response time for this zone:

0 = 10mSec; 1 = 350mSec; 2 = 700mSec; 3 = 1.2 secs (see field *174).

NOTE: If zone doubling is being used, the response time selected for zones 02-08 automatically applies to each zone's associated doubled zone.

INPUT TYPE

Skipped for zones 2-8, and for zones 10-16 if zone-doubling enabled.

Enter the input type: 2 = AW (Aux wired zone); 3 = RF (supervised RF); 4 = UR (unsupervised RF); 5 = BR (unsupervised button type)

NOTE: To change the input type of a previously programmed wireless device to a wired zone, you must first delete the transmitter's serial number.

INPUT S/N

Enroll the transmitter's serial number and loop number as follows:

- a. Transmit two open/close sequences (for button-type transmitters, press and release the button twice, waiting about 4 seconds before pressing the button the second time).

OR

- b. Manually enter the 7-digit serial number printed on the label of the transmitter. Press the [*] key to move to the "L" position, then enter the loop number. Use the [A] (Advance) and [B] (Back) keys to move the cursor forward and back within the screen. Pressing the [C] (Copy) key will insert the previously enrolled serial number, if desired (used when programming a transmitter with several input loops).

To delete an existing serial number, enter 0 in the loop number field. The serial number will change to 0's. If 0 was entered in error, simply re-enter the loop number or press [#], and the serial number will return to the display.

2. Press [*] to continue. The system now checks for a duplicate serial/loop number. If no duplicate is found, the display shows the serial number and loop number.
3. Press [*] to continue to confirmation screen.

(prompts continued in next column)

XMIT TO confirm

Appears if you answered "Yes" at the "Set to Confirm" prompt.

Activate the loop input or button that corresponds to this zone.

Press [*] to continue.

If the serial/loop number transmitted does not match the serial number entered, a display showing the entered and the received serial/loop numbers appears.

If so, activate the loop input or button on the transmitter once again. If a match is not obtained, press the [#] key twice and then enter (or transmit) the correct serial number.

Press [*] to continue

If the serial number transmitted matches the serial number entered, the keypad will beep 3 times and a summary display will appear, showing that zone's programming. An "s" indicates that a transmitter's serial number has been enrolled.

Press [*] to accept the zone information and continue.

PROGRAM ALPHA?

Press 1 if you want to program descriptors for the zone now, and refer to the *82 Descriptor Programming section for procedure. To program descriptors later, enter 0 (no).

Press [*] to return to the ENTER ZN NUM prompt.

*58 EXPERT ZONE PROGRAMMING MODE

(press *58 while in Data Programming mode)

*58 Expert Programming mode provides a faster method of zone programming than *56 Menu mode, but is recommended only for those who have had previous experience in programming controls of this type.

SET TO CONFIRM?

Select whether you want confirmation of wireless device enrollment. (See "XMIT TO CONFIRM" prompt later in this section.) **We recommend that you confirm the programming of every transmitter.**

SUMMARY SCREEN

```
Zn ZT P RC HW: RT
01 09 1 10 EL 1
```

(Typical for Zone 1, initial summary screen)

```
Zn ZT P RC IN: L
10 00 1 10 RF: -
```

(Typical for entered zone number; zone 10 in this example)

System displays summary of zone 1's current programming.

Enter the zone number being programmed, then press [*]. A summary screen for that zone is displayed, along with any current programming values, and the cursor moves to the Zone Type location. The cursor then automatically moves to the next locations after each entry is made.

Special Function Keys:

- [A] (Advance) and [B] (Back) keys on the keypad move the cursor within the screen.
- [C] (Copy) key will insert the previous zone's attributes, if desired.
- [D] key starts the **Wireless Key Programming Templates** menu (see Wireless Key Programming Templates section that follows this section).

Sequentially enter Zone Type (ZT), Partition (P), and Report Code (RC; 0-9 only; use *56 menu mode for hex codes), then Hardwire Type (HW) and Response Time (RT) for basic wired zones 1-8 or Input Device Type (IN) for zones 9 and higher (Loop Number [L] is programmed at the INPUT S/N prompt).

See *56 Zone Programming Menu Mode section described earlier for entry values.

Press [*] to save the programming and continue. If needed, press the [#] key to back up without saving.

- For wireless devices (input types RF, UR, BR), continue to the INPUT S/N (serial number/loop number) and XMIT TO CONFIRM prompts described earlier in the ***56 Zone Programming Menu Mode** section. When done, the display returns to the initial summary screen prompt to let you program the next zone.
- For wired devices, the display returns to the initial summary screen prompt to let you program the next zone.

To Quit, enter 00 at the zone number location and press [*].

WIRELESS KEY PROGRAMMING & TEMPLATES

(press the [D] key from *58 Menu mode Summary Screen)

This procedure programs the wireless keys, but a key is not active for arming/disarming until it is assigned to a user number (see *System Operation* section, Assigning Attributes Command in the Installation Instructions).

To program a wireless key, do the following:

- Use Zone programming mode to manually program a zone for each button being used on the wireless key.
OR, use the Template program mode described below to automatically program each button (loop) to a zone type based on the selected wireless key template number. Wireless key zone numbers range from zone 49-64.
- Enroll the wireless key serial number into the system.
- Assign the wireless key to a user number if it is intended to arm/disarm the system. Refer to the assigning attributes command in the *System Operation* section of the Installation Instructions manual.

TEMPLATE ?

Enter desired template number 1–6 (see chart below), then press [*] to continue.
To exit the Template screen, press [#]. The system returns to the *58 Menu mode Summary Screen.

TEMPLATE SUMMARY

L	01	02	03	04
T	23	22	21	23

The selected template is displayed.
The top line represents loop numbers, the bottom line represents each loop's zone type.
Press [*] to accept template and continue.

PARTITION

Enter the partition (1, 2) in which the key is to be active.
Press [*] to continue.

ENTER START ZONE

The system displays the lowest zone number of the highest available consecutive 4-zone group.
To start at a different zone number, enter the zone desired, and press [*]. If the system has four consecutive zones beginning with that zone, the zone number is displayed. If not, the system will again display a suggested zone that can be used.
If the required number of consecutive zones is not available at all, the system will display "00".

Press [*] to accept.

Continue to the INPUT S/N (serial number/loop number) and XMIT TO CONFIRM prompts described earlier in the *56 Menu Mode section.

IMPORTANT: When confirmed, the key is not active for arming/disarming until it is assigned to a user number (using the assigning attributes command, attribute "4"). See System Operation section in Installation Instructions.

When done, the keypad beeps three times and the display returns to the ENTER START ZONE prompt to let you enter the starting zone for the next wireless key.

Wireless Key Predefined Default Templates

Template Number	Loop	Function	Zone Type	Template Number	Loop	Function	Zone Type
TEMPLATE 1	1	No Response	23	TEMPLATE 4	1	No Response	23
	2	Disarm	22		2	No Response	23
	3	Arm Away	21		3	Arm Away	21
	4	No Response	23		4	Disarm	22
TEMPLATE 2	1	No Response	23	TEMPLATE 5	1	No Response	23
	2	Disarm	22		2	Arm Stay	20
	3	Arm Away	21		3	Arm Away	21
	4	Arm Stay	20		4	Disarm	22
TEMPLATE 3	1	24-hour audible	7	TEMPLATE 6	1	24-hour audible	7
	2	Disarm	22		2	Arm Stay	20
	3	Arm Away	21		3	Arm Away	21
	4	Arm Stay	20		4	Disarm	22

NOTE: Some transmitters are not intended for use in UL installations.

Deactivating & Removing a Wireless Key from the System

Deactivate a wireless key by deleting the associated user code: Delete the User Code: Master code + [8] + 2-digit user no. + [#] [0]

Remove a wireless key from the system by deleting one of the wireless key zones using Zone Programming mode:

- Press *56 while in Program mode then enter a zone number assigned to the wireless key.
- Scroll through each prompt by pressing [*] until the Input S/N prompt appears.
- Enter 0 for the loop number and press [*].
- Exit program mode.

*57 FUNCTION KEY PROGRAMMING

(press *57 while in Data Programming mode)

To assign emergency key functions (function key option "00"), first program the respective emergency zone number (95 for "A" key, 96 for "C" key, 99 for "B" key) with the desired zone type using *56 Zone Programming mode, then use *57 Function Key menu mode to assign the desired key.

To use a function key to activate a relay action (*57 Menu mode key function 07), use *79 Menu mode to map the output, and use *80 Menu mode to define the output's action; select system operation type "66."

To use a function key for a user macro, use *57 menu mode to activate the desired key, then define the macro functions using the user code + [#] + [6] [6] command.

NOTE: For SIA Compliance, panic functions for the A, B, and C function keys must be disabled, leaving the 1+*, 3+#, and *+# as panics.

PRESS KEY TO PGM

Press the desired function key to be programmed, A-D, then press [*] to continue.

When done, press 0 to exit this mode and return to data field mode.

NOTE: A key programmed as a function key is no longer available to be used as an end-user macro key or panic key.

PARTITION

Enter the partition (1-3) in which this function key will be active.

KEY "A" FUNC

Enter the desired function for this key:

00 = For the Function key selected, the functions are pre-defined as follows (default):

- If A selected = Zone 95 (emergency key, same as [1] [*] pair)
- If B selected = Zone 99 (emergency key, same as [*] [#] pair)
- If C selected = Zone 96 (emergency key, same as [3] [#] pair)
- If D selected = Single-button paging

KEY "A" FUNC (continued)

- 01 = Single-button paging (sends a 999-9999 message to pager)
- 02 = Display time
- 03 = Arm AWAY (reports as User 00 if closing reports are enabled)
- 04 = Arm STAY (reports as User 00 if closing reports are enabled)
- 05 = Arm NIGHT-STAY (reports as User 00 if closing reports enabled)
- 06 = Step Arming (arms STAY, then NIGHT-STAY if enabled, then AWAY)
- 07 = Output Device Command (for device programmed as system operation type 66 in *80 Menu Mode)
- 08 = Communication Test (sends Contact ID code 601)
- 09 -12= Macro Keys 1-4 respectively (defined by [#] [6] [6] command)

Press [*] to continue; returns to key number prompt with the next function key letter displayed.

*79 OUTPUT DEVICE MENU MODE

(press *79 while in Programming mode)

Use *79 Menu Mode to assign output numbers and map them to device addresses.

The system also provides installer-defined output functions, which can be assigned to any of the physical outputs. The action of any one of the outputs can be based on as many of these functions as desired. Use *80 Menu Mode to define output functions.

ENTER OUTPUT NO.

01-18 = relays

[*] to continue

OUT NORM LOW (appears only for triggers 17/18)

0 = no (standard default); sets the output level normally high

1 = yes; sets the output normally low (can be used for resetting 4-wire smoke detectors)

[*] to return to Output Number prompt

Power Reset: This control does not automatically reset power to 4-wire smoke detector zones, so you must use a relay (e.g., 4204, 4229) or on-board trigger to reset power (also required for fire verification).

OUTPUT TYPE

0 = delete; 1 = relay (skip to "B" prompt); 2 = Powerline Carrier device (skip to "A" prompt)

[*] to continue.

A: UNIT No. (if X-10 was selected as Output Type)

Enter the unit code (01-16, set at the device).

[*] to return to the Output Number prompt continue

B: MODULE ADDR (if relay was selected as Output Type)

Enter the predefined address for this module (07-15; see Table of Device Addresses later in this manual).

Make sure the module's DIP switches are set to the selected address.

NOTE: If using Multi-Mode (IP/Cell feature), select one of the 4204 addresses, though a physical 4204 module is not installed at the selected address. If using 2-4204 multi-mode option, the second 4204 address is automatically one number higher than the first one selected. Make sure these addresses are not used by physical 4204 modules that may be installed. See *29 Menu Mode section for enabling Multi-Mode.

[*] to continue

REL POSITION (actual relay number on module)

For 4204 modules, relay numbers are 1-4. For 4229 modules, relay numbers are 1-2.

NOTE: If using multi-mode, program the relays to trigger on those system events to be sent to the user's email address. (4204 option = up to 4 events; 2-4204 option = up to 8 events) See *29 Menu Mode section for enabling Multi-Mode.

[*] to return to the Output Number prompt for programming the next device

*80 OUTPUT FUNCTION MENU MODE

(press *80 while in Programming mode)

Use this mode to program up to 48 output function definitions that provide automated control of any of the output devices, based on events occurring on individual zones or zones assigned to certain zone types.

OUTPUT FUNCT.

Enter the output function number to be defined: 01-48

[*] to continue; 00 = exit

SUMMARY SCREEN

01	A	E	P	Trig
?00	0	0	-	ZL=00

This screen displays a summary of the current output programming
A = Output Action; E = Triggering event; P = Partition; Trig = Trigger type
Question mark indicates the device shown has not been mapped. Use *79 Menu mode to map the device.

[*] to continue

ACTIVATED BY

0 = delete (deletes the output function and any previous programming); a confirmation prompt appears.

To delete this output definition, press 1. If you do not want to delete this output, press 0.

1 = zone list (go to "A" prompt); 2 = zone type (go to "B" prompt); 3 = zone number (go to "C" prompt)

Press [*] to continue

"A" (if zone list was selected)

ZN LIST

Enter the desired zone list number (01-08). At the ENTER EVENT prompt, enter the zone list event that will activate this output (0 = restore; 1 = alarm; 2 = fault; 3 = trouble)

Press [*] to continue and skip to the "Output Action" prompt.

"B" (if zone type was selected)

ENTER ZN TYPE

Enter the desired zone type. See list below *80 Worksheet for zone types. At the PARTITION prompt, enter the partition in which this zone type will occur (0 = any partition; 1 = partition 1; 2 = partition 2; 3 = partition 3). Press [*] to continue and skip to the "Output Action" prompt.

*80 Menu Mode (continued)

"C" (if zone number was selected)

ENTER ZN NO.

Enter the desired zone number, then press [*] to continue. At the ENTER EVENT prompt, enter the zone event that will activate this output (0 = restore; 1 = alarm/fault/trouble).

Press [*] to continue to the OUTPUT ACTION prompt

OUTPUT ACTION

0 = off; 1 = Close for 2 seconds; 2 = Close and Stay Closed; 3 =

Continuous Pulse 1 sec on and 1 sec off

4 = Change Device State; 5 = Duration 1 (see data field *177); 6 = Duration 2 (see data field *177)

Press [*] to continue.

ENTER OUTPUT NO.

Enter the device output number (programmed in *79 Menu Mode) you want associated with this output.

01-16 = output no.; 17-18 = on-board triggers

Press [*] to continue.

SUMMARY SCREEN

A summary screen appears showing the programmed settings.

Press [*] to return to OUTPUT FUNCTION NUMBER prompt.

*81 ZONE LIST MENU MODE

(press *81 while in Programming mode)

Zone lists let you group individual zones for use with certain system actions.

List No.	Used for...
1, 2	general purpose (GP)
3	chime-by-zone (see field *26 to enable option)
4	cross zones (see note at right)
5	night stay zones
6	general purpose V21SIALTE : dial delay disable
7	general purpose V21SIALTE : unlimited reports
8	general purpose
9	zones that activate Pager 1
10	zones that activate Pager 2
11	zones that activate Pager 3
12	zones that activate Pager 4

Notes

- Any list may include any or all of the system's zone numbers.
- A zone list can be assigned to more than one output relay.
- Zone List 4: When creating zone list 4 for cross zoning, include only zones assigned to zone types 3, 4, or 5. Do not include zones that have delays (entry/exit zones, interior w/delay) or 24-hour zones, as these zone types may produce unpredictable operation and may not function as intended. See field *85 for Cross Zone Timer option.
- Zone List 6: **V21SIALTE**: See field *50 for Dial Delay Disable option.
- Zone List 7: **V21SIALTE**: See field *93 for Unlimited Reports option.

ZONE LIST NO.

Enter the zone list number (01-12) to program (or 00 to exit this mode).

Press [*] to continue.

ENTER ZN NUM.

Enter each zone number (01-64) to add to the zone list, followed by pressing [*] (example, 01*, 02*, 03*).

Press 00 to continue.

IMPORTANT: Do not include fire zones in zone lists that are used to STOP device actions.

DEL ZN LIST?

0 = don't delete list; current zone list remains saved

1 = delete this zone list; All zones in the zone list will be deleted.

[*] to continue

DELETE ZONE?

0 = don't delete zones; save the entire zone list and return to the Zone List No. prompt

1 = go to next prompt to delete zones

[*] to continue

ZN TO DELETE?

Enter each zone (01-64) to be deleted from the list, following each with [*]. 00 when done to return to the Zone List No. prompt.

*82 ALPHA DESCRIPTOR PROGRAMMING

PRE-DEFINED DESCRIPTORS

PROGRAM ALPHA

0 = no (quit Alpha mode)

1 = yes

Press [*] or [#] to continue.

CUSTOM WORDS

0 = no (continue to descriptor programming)

1 = yes (go to custom word programming)

Press 0 to program standard alpha descriptors. The system will then display the descriptor for zone 1.

To program custom words, press 1 (custom words are described later).

Press [*] to continue.

* ZN 01

Descriptor screen for zone 1 appears. To program a descriptor (up to 3 words) for a zone, do the following:

- Press [*] plus the desired zone number (existing descriptor, if any, is displayed), then press [*] plus the zone number again (flashing cursor).
- a. Press [#] plus the 3-digit number from the Alpha Vocabulary List on page 19 for the first word.
b. Press [6] to accept the word and move the cursor for the next word.
- Repeat steps 2a and 2b for the second and third words (if used).
- When all words have been entered, press [8] to save the descriptor for that zone. The flashing cursor disappears.
- Repeat steps 1-4 to assign a descriptor for the next zone.
- When all descriptors have been entered, press [*] + 0 + 0 (or simply press [#]) after the last descriptor has been saved to return to the PROGRAM ALPHA? prompt.
Enter 0 (no) at the prompt to exit this mode and return to Data Field mode.

ADDING CUSTOM WORDS (up to 10 words)

For custom words, the keys have the following functions:

- | | |
|-----|--|
| [4] | moves cursor one space to the left. |
| [6] | moves cursor one space to the right. |
| [8] | saves the new word in the system's memory. |

- Select Custom Word mode (enter 1) when the prompt "CUSTOM WORD ?" is displayed.
- Enter the number (01-10, or 11, 12, 13 for partition descriptors- see below) of the custom word or word string to be created, corresponding to index numbers 245 - 254 respectively. A cursor appears at the beginning of the second line.
NOTE: Custom words 8, 9, and 10 are "reminder words" that can be programmed to display using Scheduling Mode.
- Refer to the Character (ASCII) Chart on the next page.
Press [#], followed by the two-digit entry for the first letter you would like to display (e.g., # 6 5 for "A").
Press [6] to advance the cursor to the right, in position for the next character.
To delete a character, simply enter the SPACE character (#32) at the unwanted character's location.
- Repeat Step 3 to create the desired word(s). Each word can be a maximum of 10 characters (except custom message/partition descriptor word numbers 11, 12, and 13, which can be a maximum of 16 characters).
- When the word is complete, press the [8] key to save the custom word(s) in the vocabulary list and return to the "CUSTOM WORD ?" display.
- Repeat Steps 1-5 for other custom words to be entered. To change a custom word, just overwrite it. When all words have been programmed, enter 0 at the "CUSTOM WORD ?" prompt to return to the Program Alpha prompt. Enter 0 again to exit Descriptor mode.

To Assign Partition/Custom Message Descriptors, use Adding Custom Words procedure, but: use the following word numbers in step 2:
11 = partition 1; 12 = partition 2; 13 = common lobby

ALPHA VOCABULARY LIST (For Entering Zone Descriptors)

000	(Word Space)	• 057	DOOR *	• 105	KITCHEN *	• 155	RADIO	209	- V -
	- A -	• 059	DOWN			• 156	REAR	210	VALVE
• 001	AIR	• 060	DOWNSTAIRS		- L -	• 157	RECREATION	212	VOLTAJE
• 002	ALARM *	• 061	DRAWER	• 106	LAUNDRY *	• 159	REFRIGERATION		- W -
004	ALLEY	• 062	DRIVEWAY	• 107	LEFT	• 160	RF	213	WALL
005	AMBUSH	• 064	DUCT	• 108	LEVEL	• 161	RIGHT	214	WAREHOUSE
• 006	AREA		- E -	• 109	LIBRARY *	• 162	ROOM *	• 216	WEST
• 007	APARTMENT	• 065	EAST	• 110	LIGHT	• 163	ROOF	• 217	WINDOW *
• 009	ATTIC *	• 066	ELECTRIC	• 111	LINE		- S -	• 219	WING
010	AUDIO	• 067	EMERGENCY *	• 113	LIVING *	• 164	SAFE	220	WIRELESS
	- B -	• 068	ENTRY	• 114	LOADING	• 165	SCREEN		- X -
• 012	BABY *	• 069	EQUIPMENT	• 115	LOCK	• 166	SENSOR	222	XMITTER
• 013	BACK *	• 071	EXIT *	• 116	LOOP	• 167	SERVICE		- Y -
• 014	BAR	• 072	EXTERIOR	• 117	LOW	• 168	SHED *	• 223	YARD
• 016	BASEMENT *		- F -	• 118	LOWER	• 169	SHOCK		- Z -
• 017	BATHROOM *	• 073	FACTORY		- M -	• 170	SHOP *	224	ZONE (No.)
018	BED	• 075	FAMILY	• 119	MACHINE	• 171	SHORT	• 225	ZONE *
• 019	BEDROOM *	• 076	FATHERS	• 121	MAIDS	• 173	SIDE *	• 226	0
020	BELL	• 077	FENCE	• 122	MAIN *	• 174	SKYLIGHT	• 227	1
• 021	BLOWER	• 079	FIRE *	• 123	MASTER *	• 175	SLIDING *	• 228	1ST *
• 022	BOILER	• 080	FLOOR *	• 125	MEDICAL *	• 176	SMOKE *	• 229	2
023	BOTTOM	• 081	FLOW	• 126	MEDICINE	• 178	SONS	• 230	2ND *
025	BREAK	• 082	FOIL	• 128	MONEY	• 179	SOUTH	• 231	3
• 026	BUILDING	• 083	FOYER	• 129	MONITOR	• 180	SPRINKLER	• 232	3RD *
	- C -	• 084	FREEZER	• 130	MOTHERS	• 182	STATION	• 233	4
028	CABINET	• 085	FRONT *	• 131	MOTION *	• 184	STORE	• 234	4TH
• 029	CALL		- G -	• 132	MOTOR	• 185	STORAGE *	• 235	5
030	CAMERA	• 089	GARAGE *		- N -	• 186	STORY	• 236	5TH
031	CAR	• 090	GAS	• 134	NORTH	• 190	SUPERVISED *	• 237	6
033	CASH	• 091	GATE	• 135	NURSERY	• 191	SUPERVISION	• 238	6TH
034	CCTV	• 092	GLASS		- O -	• 192	SWIMMING	• 239	7
035	CEILING	• 093	GUEST	• 136	OFFICE *	• 193	SWITCH	• 240	7TH
036	CELLAR	• 094	GUN	• 138	OPEN *	• 194	TAMPER	• 241	8
• 037	CENTRAL		- H -	• 139	OPENING	• 196	TELCO	• 242	8TH
038	CIRCUIT	• 095	HALL *	• 140	OUTSIDE	• 197	TELEPHONE	• 243	9
• 040	CLOSED *	• 096	HEAT	• 142	OVERHEAD	• 199	TEMPERATURE	• 244	9TH
• 046	COMPUTER	• 098	HOLDUP		- P -	• 200	THERMOSTAT	245	Custom Word #1
047	CONTACT	• 099	HOUSE *	• 143	PAINTING	• 201	TOOL	246	Custom Word #2
	- D -	• 100	INFRARED	• 144	PANIC *	• 202	TRANSMITTER	247	Custom Word #3
• 048	DAUGHTERS		- I -	• 145	PASSIVE		- U -	248	Custom Word #4
049	DELAYED	• 101	INSIDE *	• 146	PATIO *	• 205	UP	249	Custom Word #5
• 050	DEN *	• 102	INTERIOR	• 147	PERIMETER	• 206	UPPER	250	Custom Word #6
051	DESK	• 103	INTRUSION	• 148	PHONE	• 207	UPSTAIRS *	251	Custom Word #7
• 052	DETECTOR *		- J -	• 150	POINT	• 208	UTILITY *	252	Custom Word #8
• 053	DINING *	• 104	JEWELRY	• 151	POLICE *			253	Custom Word #9
054	DISCRIMINATOR		- K -	• 152	POOL *			254	Custom Word #10
055	DISPLAY			• 153	POWER				

Note: *Italicized* words followed by an asterisk indicate those words supported by the 6160V Voice Keypads.
Bulleted and **bold** words indicate those words supported by the 6280W, 6280S, and Tuxedo Touch™ series keypads.

CHARACTER (ASCII) CHART (For Adding Custom Words)

32 (space)	41)	50 2	59 ;	68 D	77 M	86 V
33 !	42 *	51 3	60 <	69 E	78 N	87 W
34 "	43 +	52 4	61 =	70 F	79 O	88 X
35 #	44 ,	53 5	62 >	71 G	80 P	89 Y
36 \$	45 -	54 6	63 ?	72 H	81 Q	90 Z
37 %	46 .	55 7	64 @	73 I	82 R	
38 &	47 /	56 8	65 A	74 J	83 S	
39 '	48 0	57 9	66 B	75 K	84 T	
40 (49 1	58 :	67 C	76 L	85 U	

SETTING SCHEDULES

(Installer Code + [#] + [6] [4])

NOTES:

- The master code can only access schedules 01-16 and events 00-07.
- System clock must be set before schedules can be used.
- Programmed schedules do not take effect until the next scheduled "start" time. (e.g., if programming a schedule time window for 8AM to 5PM, the schedule does not take effect until 8AM after the schedule has been programmed.)

ENTER SCHED NO.

01-16 = end-user schedules; 17-32 = installer-only schedules

[*] to continue.

To Quit, enter 00.

ENTER EVENT

00 = clear event

01 = Relay On/Off

02 = User Access

03 = Latch Key Report to Pager (sent to all pagers in the user's partition; message sent is 777-7777. User must be enabled for paging and system must be armed before reporting can occur.)

04 = Forced Stay Arming (Forced bypass is automatically enabled regardless of setting in field *23)

05 = Forced Away Arming (Forced bypass is automatically enabled regardless of setting in field *23)

06 = Auto Disarm

07 = Display "Reminder"

10 = Display custom words (if selected, system displays custom words 8, 9, and 10 at defined time. Can be used as installer's reminder message to the end user); programmable by installer only

11 = Periodic Test Report (see key commands in **Test Report Code**, data field *64, to quickly set periodic test reporting intervals); programmable by installer only

[*] to continue.

DEVICE NUMBER (for event 1 relay on/off)

01-18; [*] to continue.

GROUP NUMBER (for event 2 user access)

1-8; [*] to continue.

PARTITION (for events 3-7,10,12)

0 = all partitions; 1 = partition 1; 2 = partition 2; 3 = common

[*] to continue.

START

01-12 = hour; 00-59 = minute; 0 = AM; 1 = PM; to select days, position the cursor under the desired days using the [*] key to move forward, then press "1" to select the day.

[*] to continue.

STOP (for events 1 relay on/off; 2 user access; 3 latch key report)

See START for entries. [*] to continue.

REPEAT

0 = do not repeat; 1 = repeat schedule weekly; 2 = repeat schedule biweekly (every other week); 3 = repeat schedule every third week; 4 = repeat schedule every fourth week (28 days)

[*] to continue

RANDOMIZE (for events 01 and 11)

0 = no; 1 = yes

If selected, the scheduled start and stop times will vary within 60 minutes of the "hour" time. For example, if a schedule is set to start at 6:15pm, it will do so the first time 6:15pm arrives, but on subsequent days it will start anytime between 6:00 and 6:59 p.m.

NOTE: Do not use the random option if the start and stop times are within the same "hour" setting, otherwise unpredictable results may occur (e.g., the randomized stop time may occur before the start time).

[*] to continue and return to ENTER SCHED NO. prompt to program the next schedule.

AVS SYSTEM ENABLE AND QUICK PROGRAMMING COMMANDS

Applies to an AVS system using an ECP connection to the control.

1. Install the AVS module according to its instructions.
2. Use one of the control's AVS Quick Program commands as follows (see Quick Program Command Results below for results of each command):
 - **installer code + [#] + 0 + 3:** enable AVS operation without panel sounds on the AVST speaker
 - **installer code + [#] + 0 + 4:** enable AVS operation and enable panel sounds on the AVST speaker
3. Use data field *55 Dynamic Signaling Priority to enable the reporting path for AAV communication.
4. To undo the Quick Command programming, use the following commands:
 - **installer code + [#] + 0 + 5:** remove all options set by [#] + 03 quick command
 - **installer code + [#] + 0 + 6:** remove all options set by [#] + 04 quick command

AVS Quick Program Command Results

When either the #03 or #04 Quick Program command is used, the following are automatically programmed and no longer available for other control panel purposes.

Pre-Programmed	#03 Command	#04 Command
Output Function No. (*80 mode)	46 (zone type 60, relay 15) 47 (zone type 61, relay 16) 48 (zone type 62, relay 16)	Same as #03 plus: 41 (zone type 14, relay 13) 42 (zone type 22, relay 13) 43 (zone type 39, relay 14) 44 (zone type 33, relay 14) 45 (zone type 36, relay 14)
Output Relay No. (*79 mode)	15 (addr 11, relay pos 2) 16 (addr 11, relay pos 1)	Same as #03 plus: 13 (addr 11, relay pos 4) 14 (addr 11, relay pos 3)
Protection Zone (*56/*58 mode)	4229 zn 48 (zt 81, addr 11)	Same as #03 command
Device Address	address 11 (AVS module)	Same as #03 command
Data Field *91	AAV enabled	AAV enabled

SETTING THE REAL-TIME CLOCK

The Real-Time Clock must be set before completing the installation.

NOTE: All partitions must be disarmed before the Real-Time Clock can be set.

1. Master Code + [#] + [6] [3]
2. Press [*] when the time/date is displayed. A cursor appears under the first digit of the hour.
To move cursor ahead, press []. To go back, press [#].*
 - Enter the 2-digit hour setting, followed by the 2-digit minute setting, then press [1] for PM or [2] for AM.
 - Enter the last two digits of the current year, followed by the 2-digit month setting and the 2-digit day setting.
3. To exit, press [*] when cursor is at the last digit, or wait 30 seconds.

UPLOADING/DOWNLOADING VIA THE INTERNET

This control supports upload/download programming capability via the Internet by using the AlarmNet network and Compass downloading software. The control must be connected to the Internet (via the on-board RJ45 connector or Cell module), have all IP features programmed (*29 Menu mode), and be registered with AlarmNet.

The following is required at the Downloading Office:

- Broadband Internet Access and Broadband (Cable/DSL) Modem
- Broadband (Cable/DSL) Router (optional, if connecting more than one device to the Internet)
- Computer running Compass Downloading Software version that supports Internet upload/download for this control.

To perform upload/download functions:

1. Connect the computer to the Internet and start the Compass downloading software.
2. Open the control's account, then select the Communications function and click the **Connect** button.
3. At the Connect screen, check that the control's MAC address is entered and the TCP/IP checkbox is checked.
4. Click **Connect**. The Internet connection to the control is made automatically via AlarmNet.
5. Once connected, use the Compass downloading software as normal to perform upload/download functions.

ZONE TYPE DEFINITIONS

Zone types define the way in which the system responds to faults in each zone.

Type 00 Zone Not Used

Program a zone with this zone type if the zone is not used.

Type 01 Entry/Exit Burglary #1

- Assign to zones that are used for primary entry and exit.
- Provides entry delay when zone is faulted if control is armed in the Away, Stay, or Night-Stay modes.
- No entry delay provided when the panel is armed in the Instant/Maximum mode.
- Entry delay #1 is programmable for each partition (field *35).
- Exit delay begins whenever the control is armed, regardless of the arming mode selected, and is programmable (field Q34).

Type 02 Entry/Exit Burglary #2

- Assign to zones that are used for entry and exit and require more time than the primary entry/exit point.
- Provides a secondary entry delay, similar to entry delay #1.
- Entry delay #2 is programmable for each partition (field *36).
- Exit delay is same as described for Type 01.

Type 03 Perimeter Burglary

- Assign to all sensors or contacts on exterior doors and windows.
- Provides an instant alarm if the zone is faulted when the panel is armed in the Away, Stay, Night-Stay, Instant or Maximum modes.

Type 04 Interior Follower

- Assign to a zone covering an area such as a foyer, lobby, or hallway through which one must pass upon entry (to and from the keypad).
- Provides a delayed alarm (using the programmed entry 1 time) if the entry/exit zone is faulted first. Otherwise this zone type gives an instant alarm.
- Active when the panel is armed in the Away mode.
- Bypassed automatically when the panel is armed in the Stay or Instant modes; if armed in Night-Stay mode, zones assigned to zone list 05 (night-stay zone list) are not bypassed when system armed in Night-Stay mode.

Type 05 Trouble by Day/Alarm by Night

- Assign to a zone that contains a foil-protected door or window (such as in a store), or to a zone covering a sensitive area such as a stock room, drug supply room, etc.
- Can also be used on a sensor or contact in an area where immediate notification of an entry is desired.
- Provides an instant alarm if faulted when armed in the Away, Stay, Night-Stay, Instant or Maximum (night) modes.
- During the disarmed state (day), the system will provide a latched trouble sounding from the keypad (and a central station report, if desired).

Type 06 24-hr Silent Alarm

- Usually assigned to a zone containing an emergency button.
- Sends a report to the central station but provides no keypad display or sounding.

Type 07 24-hour Audible Alarm

- Assign to a zone that has an emergency button.
- Sends a report to the central station, and provides an alarm sound at the keypad, and an audible external alarm.

Type 08 24-hour Auxiliary Alarm

- Assign to a zone containing an emergency button, or to a zone containing monitoring devices such as water or temperature sensors.
- Sends a report to the central station and provides an alarm sound at the keypad. (No bell output.)

Type 09 Supervised Fire

- Provides a fire alarm on short circuit and a trouble condition on open circuit. A fire alarm produces a pulsing bell output.
- This zone type is always active and cannot be bypassed.

Type 10 Interior w/Delay

- Provides entry delay (using the programmed entry time), if tripped when the panel is armed in the Away mode.
- Entry Delay 1 begins whenever sensors in this zone are violated, regardless of whether or not an entry/exit delay zone was tripped first.
- Bypassed when the panel is armed in the Stay or Instant modes; if armed in Night-Stay mode, zones assigned to zone list 05 (night-stay zone list) are not bypassed when system armed in Night-Stay mode.

Type 12 Monitor Zone

- Works as a dynamic monitor of a zone fault/trouble (not alarm). In the case of a short/open, the message, "**ALARM*-24 Hr. Non-Burg. -#XXX " (where XXX is the zone number) will be sent to the Central Station. The system keypad will display a "check" message indicating the appropriate zone (but keypad beeping does not occur). Upon restoral of the zone, the message, "**RESTORE*-24 Hr. Non-Burg. -#XXX " is sent to the Central Station.
- The "check" message will automatically disappear from the keypad dynamically, when the zone restores; a user code + off sequence is not needed to reset the zone.
- Faults of this zone type are independent of the system, and can exist at the time of arming without interference.
- Since this is a "trouble" zone type, do not use this zone type with relays set to activate upon "alarm."

Type 14 24 Hour Carbon Monoxide Monitor

- Assigned to any zone with a carbon monoxide detector.
- A carbon monoxide alarm produces keypad and detector sounding (does not affect bell output).
- Always active and cannot be bypassed.

Type 16 Fire w/Verification

- Provides a fire alarm when zone is shorted, but only after the alarm is verified to help eliminate false alarms due to electrical or physical transients.
- Verifies alarm by resetting smoke detectors after short is detected (removes power 7 seconds for zone 1, 3 seconds for trigger output). Another short circuit within 90 seconds triggers fire alarm, otherwise first alarm is ignored.
- Provides a trouble response when zone is open.

Type 20 Arm-Stay (BR only)

- Arms the system in Stay mode when the zone is activated.
- Pushbutton units send the user number to the central station when arming or disarming.
- User number for button must be assigned.

Type 21 Arm-Away (BR only)

- Arms the system in Away mode when the zone is activated.
- Pushbutton units send the user number to the central station when arming or disarming.
- User number for button must be assigned.

Type 22 Disarm (BR only)

- Disarms the system when the zone is activated.
- User number for button must be assigned.

Type 23 * No Alarm Response

- Can be used on a zone when an output relay action is desired, but with no accompanying alarm (e.g., lobby door access).

Type 24 Silent Burglary

- Usually assigned to all sensors or contacts on exterior doors and windows where bells and/or sirens are NOT desired.
- Provides an instant alarm, with NO audible indication at any keypad or external sounder, if the zone is faulted when the system is armed in the Away, Stay, Instant, or Maximum modes.
- A report is sent to the central station.

Type 77 Keyswitch

- Assign to zone wired to a keyswitch.
- Do not use input type "BR" devices with this zone type.

Type 81 AAV Monitor Zone (for AVS)

- Assign to zone connected to AVS module.
- Monitors 2-way voice sessions as follows:
 - When the zone is faulted, all alarm sounding and dialer reporting stops, except for fire alarms, which immediately terminate the voice session and cause a fire report to be sent.
 - When the zone is restored (session ended), sounding resumes (if bell timeout has not expired) and stopped reports are sent.

Types 90-93 Configurable

Allows for various custom responses. Options include response to entry/exit delays, response opens/shorts, types of alarm/trouble sounding, dial delay, and unique Contact ID report codes. Types 92 and 93 can only be programmed via downloader. UL installations: Zone Types 90 -93 may not be used as fire or burglar alarm zones on fire or UL burglar alarm installations.

- * The system can still be armed when these zone types are in a faulted condition.

*56 ZONE PROGRAMMING WORKSHEET

[default shown in brackets]

Zone	Zn Type	Part.	Report	Hardwire Type	Rsp. Time	Location	
1	[09]	[1]		[EOL]	[1]		
2	[01]	[1]		[EOL]	[1]		
3	[03]	[1]		[EOL]	[1]		
4	[03]	[1]		[EOL]	[1]		
5	[03]	[1]		[EOL]	[1]		
6	[03]	[1]		[EOL]	[1]		
7	[03]	[1]		[EOL]	[1]		
8	[03]	[1]		[EOL]	[1]		
Zone	Zn Type	Part.	Report	Input Type	Loop	Serial No.	Location
9		[1]		[RF]			
10		[1]		[RF]			
11		[1]		[RF]			
12		[1]		[RF]			
13		[1]		[RF]			
14		[1]		[RF]			
15		[1]		[RF]			
16		[1]		[RF]			
17		[1]		[RF]			
18		[1]		[RF]			
19		[1]		[RF]			
20		[1]		[RF]			
21		[1]		[RF]			
22		[1]		[RF]			
23		[1]		[RF]			
24		[1]		[RF]			
25		[1]		[RF]			
26		[1]		[RF]			
27		[1]		[RF]			
28		[1]		[RF]			
29		[1]		[RF]			
30		[1]		[RF]			
31		[1]		[RF]			
32		[1]		[RF]			
33		[1]		[RF]			

NOTES:
 Zone Type: see chart in *56 Zone Programming Menu mode section.
 Report Code: enabled if first digit is a non-zero number
 Hardwire Type (zns 2-8):
 0 = EOL 3 = ZD
 1 = NC 4 = DB
 2 = NO
 Input Type:
 2 = AW (zones 9-48)
 3 = RF (zones 9-48)
 4 = UR (zones 9-48)
 5 = BR (zones 49-64)
NOTE: Zones 9-16 not available if zone doubling enabled.
 Response Time:
 0 = 10msec
 1 = 350msec
 2 = 700msec
 3 = 1.2 sec

Reserved Zones
 91 = addressable device report enable/disable default zone type = [05].
 92 = Duress report enable/disable

Zone	Zn Type	Part.	Report	Input Type	Loop	Serial No.	Location
34		[1]		[RF]			
35		[1]		[RF]			
36		[1]		[RF]			
37		[1]		[RF]			
38		[1]		[RF]			
39		[1]		[RF]			
40		[1]		[RF]			
41		[1]		[RF]			
42		[1]		[RF]			
43		[1]		[RF]			
44		[1]		[RF]			
45		[1]		[RF]			
46		[1]		[RF]			
47		[1]		[RF]			
48		[1]		[RF]			
49		[1]		[BR]			
50		[1]		[BR]			
51		[1]		[BR]			
52		[1]		[BR]			
53		[1]		[BR]			
54		[1]		[BR]			
55		[1]		[BR]			
56		[1]		[BR]			
57		[1]		[BR]			
58		[1]		[BR]			
59		[1]		[BR]			
60		[1]		[BR]			
61		[1]		[BR]			
62		[1]		[BR]			
63		[1]		[BR]			
64		[1]		[BR]			
95	[00]	N/A**		N/A	N/A	N/A	keypad [1] / [*]
96	[00]	N/A**		N/A	N/A	N/A	keypad [3] / [#]
99	[06]	N/A**		N/A	N/A	N/A	keypad [*] / [#]

** Emergency key zones 95, 96, and 99 report the partition of the keypad used to activate the emergency zones.

***57 FUNCTION KEY WORKSHEET**

Option	Function	A			B			C			D			Comments
		P1	P2	com	P1	P2	com	P1	P2	com	P1	P2	com	
01	Paging													
02	Time Display													
03	Arm AWAY													
04	Arm STAY													
05	Arm NIGHT-STAY													
06	Step Arming													
07	Device Activation													Device:
08	Comm. Test													
09	Macro Key 1													Assign each macro key to only a single partition. †
10	Macro Key 2													Assign each macro key to only a single partition. †
11	Macro Key 3													Assign each macro key to only a single partition. †
12	Macro Key 4													Assign each macro key to only a single partition. †
00	Emergency Keys:				zone 99			zone 96			paging			
	Personal Emergency													n/a
	Silent Alarm													n/a
	Audible Alarm													n/a
	Fire													n/a

Emergency Keys: A = paired keys [1] / [*] (zone 95); B = paired keys [*] / [#] (zone 99); C = paired keys [3] / [#] (zone 96)
 † There are only four macros system-wide.

OUTPUT RELAYS WORKSHEET FOR *79, *80 and *81.

Applicable only if Relay Devices are to be used.

***79 RELAY DEVICE MAPPING (Must program before using *80)**

Output No.	OUTPUT TYPE				Description
	Module Addr.	Relay Pos (1-4)	Unit No.	X10	
01					
02					
03					
04					
05					
06					
07					
08					

Output No.	OUTPUT TYPE				Description
	Module Addr.	Relay Pos (1-4)	Unit No.	X10	
09					
10					
11					
12					
13					
14					
15					
16					
17	On-Board Trigger 1				norm output =
18	On-Board Trigger 2				norm output =

*81 ZONE LISTS WORKSHEET

Fill in the required data on the worksheet below and follow the procedure in the installation manual as you enter the data during the displays and prompts that appear in sequence.

NOTE: Record desired zone numbers below, noting that a list may include *any* or *all* of system's zone numbers.

List No.	Used For...	Contains These Zones...
01	General Purpose (GP)	
02	General Purpose	
03	Chime-by-Zone or GP	(see field *26 for Chime-by-Zone option)
04	Cross Zones or GP	(see field *85 for Cross Zone Timer option)
05	Night-Stay Zones or GP	
06	Dial Delay Disable or GP	V21SIALTE: see field *50 for Dial Delay Disable option
07	Unlimited Reports or GP	V21SIALTE: see field *93 for Unlimited Reports option
08	General Purpose	
09	Zones activating pager 1	
10	Zones activating pager 2	
11	Zones activating pager 3	
12	Zones activating pager 4	

*80 OUTPUT DEFINITIONS

Fill in the required data on the worksheet below and follow the programming procedure in the installation manual as you enter the data during the displays and prompts that appear in sequence.

- Notes:**
1. For Relays, 4229 and 4204 devices are programmed in *79, *80, and *81 modes.
 2. For Powerline Carrier devices (plcd), field *27 must be programmed with a House Code.
 3. Tamperers of expansion units cannot be used to operate devices.

Output Function Number (1-48)	Activation Type and Detail				Partition Number (P) (if using ZT trig) 0 = any 1 = partition 1 2 = partition 2 3 = common	Event (for zone list/activated by)		Action 0 = off 1 = close 2 secs 2 = stay closed 3 = pulse 4 = toggle 5 = duration 1†† 6 = duration 2††	Output Number 1-18	Device Type R = relay T = trigger X = X10
	Activated by 0=delete 1=zn list 2=zn type 3=zn no.	Zone List (ZL) 1-8 = list	Zone Type (ZT) (see table below)	Zone No. (ZN) 00=none 01-64		By Zone List	By Zone No. 0 = restore 1 = alarm/ft/trbl			
1										
2										
3										
4										
5										
6										
7										
8										
9										
10										
11										
12										
13										
14										
15										
16										
17										
18										
19										
20										
21										
22										
23										
24										
25										
26										
27										

Output Function Number (1-48)	Activation Type and Detail				Partition Number (P) (if using ZT trig) 0 = any 1 = partition 1 2 = partition 2 3 = common	Event (for zone list/activated by)		Action 0 = off 1 = close 2 secs 2 = stay closed 3 = pulse 4 = toggle 5 = duration 1†† 6 = duration 2††	Output Number 1-18	Device Type R = relay T = trigger X = X10
	Activated by 0=delete 1=zn list 2=zn type 3=zn no.	Zone List (ZL) 1-8 = list	Zone Type (ZT) (see table below)	Zone No. (ZN) 00=none 01-64		By Zone List	By Zone No. 0 = restore 1 = alarm/fit/trbl			
28										
29										
30										
31										
32										
33										
34										
35										
36										
37										
38										
39										
40										
41										
42										
43										
44										
45										
46										
47										
48										

ZONE TYPE/SYSTEM OPERATION – Choices for Zone Types are:

- | | | | |
|------------------------|------------------------------|--------------------------|-----------------------|
| 00 = Not Used | 05 = Trouble Day/Alarm Night | 10 = Interior w/Delay | 24 = Silent Burglary |
| 01 = Entry/Exit#1 | 06 = 24 Hr Silent | 12 = Monitor Zone | 77 = Keypad |
| 02 = Entry/Exit#2 | 07 = 24 Hr Audible | 14 = Carbon Monoxide§§ | 81 = AAV Monitor Zone |
| 03 = Perimeter | 08 = 24 Hr Aux | 16 = Fire w/Verification | 90-91 = Configurable |
| 04 = Interior Follower | 09 = Fire | 23 = No Alarm Response | |

§§ when used with an output function, the carbon monoxide zone type activates only upon CO alarms. Does not activate for trouble conditions.

Choices for System Operation are:

- | | | |
|-----------------------------|----------------------------|-------------------------------|
| 20 = Arming–Stay | 38 = Chime | 58 = Duress |
| 21 = Arming–Away | 39 = Any Fire Alarm | 60 = AAV Trigger |
| 22 = Disarming (Code + OFF) | 40 = Bypassing | 61 = AVS/Cell session begin § |
| 31 = End of Exit Time | 41 = **AC Power Failure | 62 = AVS/Cell session end § |
| 32 = Start of Entry Time | 42 = **System Battery Low | 66 = Function key† |
| 33 = Any Burglary Alarm | 43 = Communication Failure | 67 = Bell Failure |
| 36 = **At Bell Timeout*** | 52 = Kissoff | 68 = TELCO Line Fault |
| | 54 = Fire Zone Reset | 78 = Keypad red LED††† |
| | | 79 = Keypad green LED††† |

Note: In normal operation mode:
Code + # + 7 + NN Key Entry **starts** Device
Code + # + 8 + NN Key Entry **stops** Device

** Use 0 (any) for Partition No. (P) entry.
*** Or at Disarming, whichever occurs earlier.
† Use *57 Menu mode to assign the function key.
†† Duration is set in program field *177.
††† Device action not used for these choices.
§ automatically set when appropriate AVS Quick Command performed.

5800 SERIES TRANSMITTER INPUT LOOP IDENTIFICATION

All of the transmitters illustrated have one or more unique factory assigned input (loop) ID numbers. Each of the inputs requires its own programming zone (e.g., a 5834-4's four inputs require four programming zones).

For information on any transmitter not shown, refer to the instructions accompanying that transmitter for details regarding loop numbers, etc.

UL NOTE: The following transmitters are not intended for use in UL installations: 5819S and 5819SBR.

<p>5800CO ENROLL AS *RF*</p>	<p>5800COMBO ENROLL AS *RF*</p>	<p>5800Micra ENROLL AS *RF*</p>	<p>5800Mini ENROLL AS *RF*</p>	<p>5800PIR-RES ENROLL AS *RF*</p>
<p>5800PIR/ 5800PIR-COM ENROLL AS *RF*</p>	<p>5800PIR-OD ENROLL AS *RF*</p>	<p>5800RL PROGRAM HOUSE ID</p>	<p>5800SS1 ENROLL AS *RF*</p>	<p>5800WAVE PROGRAM HOUSE ID</p>
<p>5800RP</p>	<p>5802WXT AND 5802WXT-2 ENROLL AS *RF* OR *UR*</p>	<p>5808W3 ENROLL AS *RF*</p>	<p>5809 ENROLL AS *RF*</p>	<p>5811 ENROLL AS *RF*</p>
<p>5814 ENROLL AS *RF*</p>	<p>5815WG ENROLL AS *RF*</p>	<p>5816WH/5816BR ENROLL AS *RF*</p>	<p>5816OD ENROLL AS *RF*</p>	<p>5817 ENROLL AS *RF*</p>
<p>5817CBXT ENROLL AS *RF*</p>	<p>5818MNL ENROLL AS *RF*</p>	<p>5819 ENROLL AS *RF*</p>	<p>5819S (WHS & BRs) ENROLL AS *RF*</p>	<p>5820L ENROLL AS *RF*</p>
<p>5821 ENROLL AS *RF*</p>	<p>5822T ENROLL AS *RF*</p>	<p>5828/5828V PROGRAM HOUSE ID</p>	<p>5834-2 ENROLL AS *BR*</p>	<p>5834-4 ENROLL AS *BR*</p>
<p>5853 ENROLL AS *RF*</p>	<p>5869 ENROLL AS *RF*</p>	<p>5870API ENROLL AS *RF*</p>	<p>5898 ENROLL AS *RF*</p>	

5800-006-V3

TABLE OF DEVICE ADDRESSES

This Device	Uses Address	Reports as ††	Enabled By...
RF Receiver	00	100	*56 zone programming: input device type entry
AUI 1 (touchscreen)	01	n/a	automatic if AUI enable field *189 enabled for AUI 1
AUI 2 (touchscreen)	02	n/a	automatic if AUI enable field *189 enabled for AUI 2
AUI 3 (touchscreen)	05	n/a	automatic if AUI enable field *189 enabled for AUI 3
AUI 4 (touchscreen)	06	n/a	automatic if AUI enable field *189 enabled for AUI 4
Internal IP/Cell Device	03	103	automatic if installed and enabled in menu mode *29
Zone Expanders (4219/4229): module 1 (for zones 09 - 16) module 2 (for zones 17 - 24) module 3 (for zones 25 - 32) module 4 zones 33 - 40 module 5 zones 41 - 48	07 08 09 10 11	107 108 109 110 111	*56 zone programming: input device type entry, then: automatic if zone no. 9-16 entered as AW type or relay assigned automatic if zone no. 17-24 entered as AW type or relay assigned automatic if zone no. 25-32 entered as AW type or relay assigned automatic if zone no. 33-40 entered as AW type or relay assigned automatic if zone no. 41-48 entered as AW type or relay assigned
Relay Modules (4204): module 1 module 2 module 3 module 4	12 13 14 15	112 113 114 115	*79 output device programming: device address prompt: entered at device address prompt entered at device address prompt entered at device address prompt entered at device address prompt
Keypads: keypad 1 keypad 2 keypad 3 keypad 4 keypad 5 keypad 6 keypad 7 keypad 8	16 17 18 19 20 21 22 23	n/a n/a n/a n/a n/a n/a n/a n/a	data field programming as listed below: always enabled, all sounds enabled. data field *190 data field *191 data field *192 data field *193 data field *194 data field *195 data field *196
RIS Communication	25	n/a	automatic if Remote Interactive Services enabled in field *91

†† Addressable devices are identified by "1" plus the device address when reporting. Enter report code for zone 91 to enable addressable device reporting (default = enabled). See field *199 for addressable device (ECP) 3-digit/2-digit identification keypad display options.
AUI devices are not supervised and therefore do not report.

†† Addressable devices are identified by "1" plus the device address when reporting. Enter report code for zone 91 to enable addressable device reporting (default = reports enabled). See field *199 for addressable device (ECP) 3-digit/2-digit identification keypad display options.

AUI devices are not supervised and therefore do not report.

UL NOTICES

- Entry Delay No. 1 and No. 2 (fields *35, *36) cannot be greater than 30 seconds for UL Residential Burglar Alarm installations, and entry delay plus dial delay should not exceed 1 minute. For UL Commercial Burglar Alarm installations, total entry delay may not exceed 45 seconds.
- For UL Commercial Burglar Alarm and UL Residential Burglar Alarm installations with line security, total exit delay time must not exceed 60 seconds. For UL Burglar Alarm installations without line security, total exit delay time must not exceed 120 seconds.
- The maximum number of reports per armed period (field *93) must be set to "0" (unlimited) for UL installations.
- Periodic testing (see scheduling mode) must be at least every 24 hours.
- Alarm Sounder plus Auxiliary Power currents must not exceed 600mA total for UL installations (Aux power 500mA max.).
- All partitions must be owned and managed by the same person(s).
- All partitions must be part of one building at one street address.
- If used, the audible alarm device(s) must be placed where it/they can be heard by all partitions.
- For UL commercial burglar alarm installations the control unit must be protected from unauthorized access. The tamper switch installed to protect the control unit enclosure door is suitable for this purpose.
- Remote downloading without an alarm company technician on-site (unattended downloading) is not permissible for UL installations.
- Auto-disarming is not a UL Listed feature.
- As SIA limits for delay of alarm reporting and sounding can exceed UL limits for commercial and residential applications, the following UL requirements per UL681 are provided:
The maximum time that a control unit shall be programmed to delay the transmission of a signal to a remote monitoring location, or to delay the energizing of a local alarm sounding device to permit the alarm system user to enter and disarm the system, or to arm the system and exit shall not exceed:
a) 60 seconds for a system with standard line security or encrypted line security,
b) 120 seconds for a system without standard line security or encrypted line security, or
c) 120 seconds for a system that does not transmit an alarm signal to a remote monitoring location.
- This control is not intended for bank safe and vault applications.

SIA QUICK REFERENCE GUIDE

- *31 Single Alarm Sounding per Zone: If "0" selected, "alarm sounding per zone" will be the same as the "number of reports in armed period" set in field *93 (1 if one report, 2 if 2 reports, unlimited for zones in zone list 7).
- *34 Exit Delay: Minimum exit delay is 45 seconds.
- *35/*36 Entry Delay 1 and 2: Minimum entry delay is 30 seconds.
- *37 Audible Exit Warning: Feature always enabled; field does not exist.
- *39 Power Up in Previous State: Must be "1," power up in previous state.
- *40 PABX Access Code or Call Waiting Disable: If call waiting is used, call waiting disable option in field *91 must be set.
- *50 Burglary Dial Delay: Delay must be minimum of 30 seconds.
- *59 Exit Error Alarm Report Code: Always enabled.
- *68 Cancel Report Code: Default is "code enabled."
- *69 Recent Closing Report Code: Always enabled.
- *91 Option Selection: Exit Delay option should be enabled. If call waiting is used, Call Waiting Disable must be set to "1" (enabled).
- *93 No. reports in Armed Period: Must be set for 1 or 2 report pairs.
- Cross zone timer is set in field *85; cross zone pairs are assigned in zone list 4 using *81 Zone List mode.
- Duress code is assigned by using the "add a user code" procedure found in the User Guide. Enable Duress code reporting by programming zone 92 using *56 Zone Programming mode.
- Fire alarm verification is a built-in system feature when a zone is programmed for zone type 16.

FEDERAL COMMUNICATIONS COMMISSION (FCC) PART 15 STATEMENTS

The user shall not make any changes or modifications to the equipment unless authorized by the Installation Instructions or User's Manual. Unauthorized changes or modifications could void the user's authority to operate the equipment.

CLASS B DIGITAL DEVICE STATEMENT

This equipment has been tested to FCC requirements and has been found acceptable for use. The FCC requires the following statement for your information:

This equipment generates and uses radio frequency energy and if not installed and used properly, that is, in strict accordance with the manufacturer's instructions, may cause interference to radio and television reception. It has been type tested and found to comply with the limits for a Class B computing device in accordance with the specifications in Part 15 of FCC Rules, which are designed to provide reasonable protection against such interference in a residential installation. However, there is no guarantee that interference will not occur in a particular installation. If this equipment does cause interference to radio or television reception, which can be determined by turning the equipment off and on, the user is encouraged to try to correct the interference by one or more of the following measures:

- If using an indoor antenna, replace it with a quality outdoor antenna.
- Reorient the receiving antenna until interference is reduced or eliminated.
- Move the radio or television receiver away from the receiver/control.
- Move the antenna leads away from any wire runs to the receiver/control.
- Plug the receiver/control into a different outlet so that it and the radio or television receiver are on different branch circuits.
- Consult the dealer or an experienced radio/TV technician for help.

This Class B digital apparatus complies with Canadian ICES-003.
Cet appareil numérique de la classe B est conforme à la norme NMB-003 du Canada.

INDUSTRY CANADA (IC) STATEMENTS

This device complies with FCC Part 15 and RSS210 of Industry Canada. Operation is subject to the following two conditions: (1) This device may not cause harmful interference, and (2) This device must accept any interference received, including interference that may cause undesired operation.

Cet appareil est conforme à la partie 15 des règles de la FCC & de RSS 210 des Industries Canada. Son fonctionnement est soumis aux conditions suivantes: (1) Cet appareil ne doit pas causer d'interférences nuisibles. (2) Cet appareil doit accepter toute interférence reçue y compris les interférences causant une réception indésirable.

Responsible Party / Issuer of Supplier's Declaration of Conformity:
Ademco Inc., a subsidiary of Resideo Technologies, Inc., 2 Corporate
Center Drive., Melville, NY 11747, Ph: 516-577-2000

Partie responsable / Émetteur de la déclaration de conformité du
fournisseur : Ademco Inc., une filiale de Resideo Technologies, Inc.,
2 Corporate Center Drive., Melville, NY 11747, Tél. 516 577-2000

TELEPHONE/MODEM INTERFACE

FCC Part 68

This equipment complies with Part 68 of the FCC rules. On the front cover of this equipment is a label that contains the FCC registration number and Ringer Equivalence Number (REN). You must provide this information to the telephone company when requested.

This equipment uses the following USOC jack: RJ31X

This equipment may not be used on telephone-company-provided coin service. Connection to party lines is subject to state tariffs. This equipment is hearing-aid compatible.

Industry Canada

NOTICE: The Industry Canada Label identifies certified equipment. This certification means that the equipment meets telecommunications network protective, operational and safety requirements as prescribed in the appropriate Terminal Equipment Technical Requirements document(s). The Department does not guarantee the equipment will operate to the user's satisfaction.

Before installing this equipment, users should ensure that it is permissible to be connected to the facilities of the local telecommunications company. The equipment must also be installed using an acceptable method of connection. The customer should be aware that compliance with the above conditions may not prevent degradation of service in some situations.

Repairs to certified equipment should be coordinated by a representative designated by the supplier. Any repairs or alterations made by the user to this equipment, or equipment malfunctions, may give the telecommunications company to request the user to disconnect the equipment.

Users should ensure for their own protection that the electrical ground connections of the power utility, telephone lines and internal metallic water pipe system, if present, are connected together. This precaution may be particularly important in rural areas.

Caution: Users should not attempt to make such connections themselves but should contact appropriate electric inspection authority, or electrician, as appropriate.

Ringer Equivalence Number Notice:

The **Ringer Equivalence Number (REN)** assigned to each terminal device provides an indication of the maximum number of terminals allowed to be connected to a telephone interface. The termination on an interface may consist of any combination of devices subject only to the requirement that the sum of the Ringer Equivalence Numbers of all the devices does not exceed 5.

Industrie Canada

AVIS: L'étiquette d'Industrie Canada identifie le matériel homologué. Cette étiquette certifie que le matériel est conforme aux normes de protection, d'exploitation et de sécurité des réseaux de télécommunications, comme le prescrivent les documents concernant les exigences techniques relatives au matériel terminal. Le Ministère n'assure toutefois pas que le matériel fonctionnera à la satisfaction de l'utilisateur.

Avant d'installer ce matériel, l'utilisateur doit s'assurer qu'il est permis de le raccorder aux installations de l'entreprise locale de télécommunication. Le matériel doit également être installé en suivant une méthode acceptée de raccordement. L'abonné ne doit pas oublier qu'il est possible que la conformité aux conditions énoncées ci-dessus n'empêche pas la dégradation du service dans certaines situations.

Les réparations de matériel homologué doivent être coordonnées par un représentant désigné par le fournisseur. L'entreprise de télécommunications peut demander à l'utilisateur de débrancher un appareil à la suite de réparations ou de modifications effectuées par l'utilisateur ou à cause de mauvais fonctionnement.

Pour sa propre protection, l'utilisateur doit s'assurer que tous les fils de mise à la terre de la source d'énergie électrique, de lignes téléphoniques et des canalisations d'eau métalliques, s'il y en a, sont raccordés ensemble. Cette précaution est particulièrement importante dans les régions rurales.

Avertissement : L'utilisateur ne doit pas tenter de faire ces raccordements lui-même; il doit avoir recours à un service d'inspection des installations électriques, ou à un électricien, selon le cas.

AVIS : L'indice d'équivalence de la sonnerie (IES) assigné à chaque dispositif terminal indique le nombre maximal de terminaux qui peuvent être raccordés à une interface. La terminaison d'une interface téléphonique peut consister en une combinaison de quelques dispositifs, à la seule condition que la somme d'indices d'équivalence de la sonnerie de tous les dispositifs n'excède pas 5.



RF EXPOSURE WARNING

The LTE-21V module must be installed to provide a separation distance of at least 7.8 in. (20 cm) from all persons and must not be co-located or operating in conjunction with any other antenna or transmitter except in accordance with FCC multi-transmitter product procedures.

WARNING - THE LIMITATIONS OF THIS ALARM SYSTEM

While this System is an advanced design security system, it does not offer guaranteed protection against burglary, fire or other emergency. Any alarm system, whether commercial or residential, is subject to compromise or failure to warn for a variety of reasons. For example:

- Intruders may gain access through unprotected openings or have the technical sophistication to bypass an alarm sensor or disconnect an alarm warning device.
- Intrusion detectors (e.g., passive infrared detectors), smoke detectors, and many other sensing devices will not work without power. Battery-operated devices will not work without batteries, with dead batteries, or if the batteries are not put in properly. Devices powered solely by AC will not work if their AC power supply is cut off for any reason, however briefly.
- Signals sent by wireless transmitters may be blocked or reflected by metal before they reach the alarm receiver. Even if the signal path has been recently checked during a weekly test, blockage can occur if a metal object is moved into the path.
- A user may not be able to reach a panic or emergency button quickly enough.
- While smoke detectors have played a key role in reducing residential fire deaths in the United States, they may not activate or provide early warning for a variety of reasons in as many as 35% of all fires, according to data published by the Federal Emergency Management Agency. Some of the reasons smoke detectors used in conjunction with this System may not work are as follows. Smoke detectors may have been improperly installed and positioned. Smoke detectors may not sense fires that start where smoke cannot reach the detectors, such as in chimneys, in walls, or roofs, or on the other side of closed doors. Smoke detectors also may not sense a fire on another level of a residence or building. A second floor detector, for example, may not sense a first floor or basement fire. Finally, smoke detectors have sensing limitations. No smoke detector can sense every kind of fire every time. In general, detectors may not always warn about fires caused by carelessness and safety hazards like smoking in bed, violent explosions, escaping gas, improper storage of flammable materials, overloaded electrical circuits, children playing with matches, or arson. Depending on the nature of the fire and/or location of the smoke detectors, the detector, even if it operates as anticipated, may not provide sufficient warning to allow all occupants to escape in time to prevent injury or death.
- Passive Infrared Motion Detectors can only detect intrusion within the designed ranges as diagrammed in their installation manual. Passive Infrared Detectors do not provide volumetric area protection. They do create multiple beams of protection, and intrusion can only be detected in unobstructed areas covered by those beams. They cannot detect motion or intrusion that takes place behind walls, ceilings, floors, closed doors, glass partitions, glass doors, or windows. Mechanical tampering, masking, painting or spraying of any material on the mirrors, windows or any part of the optical system can reduce their detection ability. Passive Infrared Detectors sense changes in temperature; however, as the ambient temperature of the protected area approaches the temperature range of 90° to 105°F (32° to 40°C), the detection performance can decrease.
- Alarm warning devices such as sirens, bells or horns may not alert people or wake up sleepers if they are located on the other side of closed or partly open doors. If warning devices are located on a different level of the residence from the bedrooms, then they are less likely to waken or alert people inside the bedrooms. Even persons who are awake may not hear the warning if the alarm is muffled by noise from a stereo, radio, air conditioner or other appliance, or by passing traffic. Finally, alarm warning devices, however loud, may not warn hearing-impaired people.
- Telephone lines needed to transmit alarm signals from a premises to a central monitoring station may be out of service or temporarily out of service. Telephone lines are also subject to compromise by sophisticated intruders.
- Even if the system responds to the emergency as intended, however, occupants may have insufficient time to protect themselves from the emergency situation. In the case of a monitored alarm system, authorities may not respond appropriately.
- This equipment, like other electrical devices, is subject to component failure. Even though this equipment is designed to last as long as 10 years, the electronic components could fail at any time.

The most common cause of an alarm system not functioning when an intrusion or fire occurs is inadequate maintenance. This alarm system should be tested weekly to make sure all sensors and transmitters are working properly. The security keypad (and remote keypad) should be tested as well.

Wireless transmitters (used in some systems) are designed to provide long battery life under normal operating conditions. Longevity of batteries may be as much as 4 to 7 years, depending on the environment, usage, and the specific wireless device being used. External factors such as humidity, high or low temperatures, as well as large swings in temperature, may all reduce the actual battery life in a given installation. This wireless system, however, can identify a true low-battery situation, thus allowing time to arrange a change of battery to maintain protection for that given point within the system.

Installing an alarm system may make the owner eligible for a lower insurance rate, but an alarm system is not a substitute for insurance. Homeowners, property owners and renters should continue to act prudently in protecting themselves and continue to insure their lives and property.

We continue to develop new and improved protection devices. Users of alarm systems owe it to themselves and their loved ones to learn about these developments.

NOTES

NOTES



The product should not be disposed of with other household waste. Check for the nearest authorized collection centers or authorized recyclers. The correct disposal of end-of-life equipment will help prevent potential negative consequences for the environment and human health.

SUPPORT, WARRANTY, & PATENT INFORMATION

For the latest documentation and online support information, please go to:
<https://mywebtech.honeywellhome.com/>

For the latest warranty information, please go to:
<https://www.security.honeywellhome.com/hsc/resources/wa/index.html>

For patent information, see <https://www.resideo.com/patent>



MyWebTech



Warranty



Patents

The Honeywell Home Trademark is used under license from Honeywell International Inc.
This product is manufactured by Resideo Technologies, Inc.

resideo

**2 Corporate Center Drive, Suite 100
P.O. Box 9040, Melville, NY 11747**

© 2019 Resideo Technologies, Inc.
www.resideo.com



800-25359V1A 8/19 Rev A