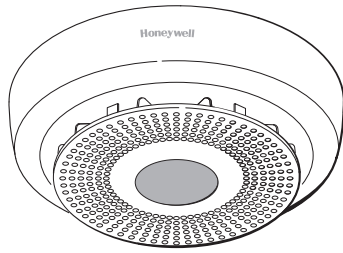


SiXSIREN

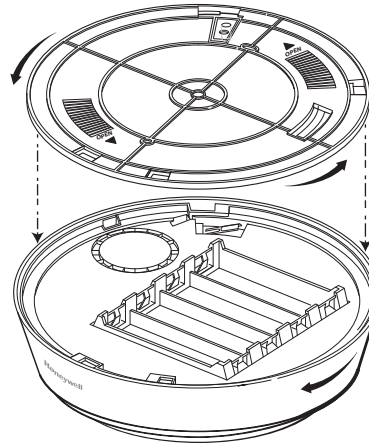
Wireless Siren/Strobe

Installation Instructions

This wireless siren/strobe is intended for use with Honeywell controls that support SiX™ series devices.



SiXSIREN



OPEN

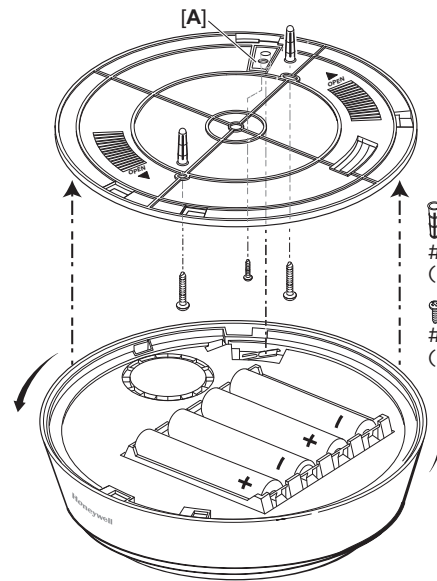
Gently twist the top of the Siren counterclockwise and the mounting bracket clockwise to separate them.

Mounting

The SiXSIREN can be mounted on the wall or on the ceiling.

The rear tamper breakout [A] MUST be mounted to a stud, solid wood, or with a robust wall anchor.

After enrolling, verify adequate signal strength by conducting Go/No Go tests (see controller's instructions) with the device in its intended mounting location. Adjust the device location and orientation as necessary.



- (2) #6 x 1" (3.5 mm x 25 mm)
- (1) #4 x 1/4" (2.9 mm x 6.4 mm)

Signal Strength Guide

Signal Strength: Range of 1-4 bars (green); Should be minimum 1 green bar for the zone being programmed. Four red bars indicate poor signal strength; the device should be relocated.

See the Control's instructions for bar indication signal strength values.

Icon	Description	Signal Strength
	4 Green Bars	Good
	3 Green Bars	
	2 Green Bars	
	1 Green Bar	
	4 Red Bars	Relocate the device

Enroll

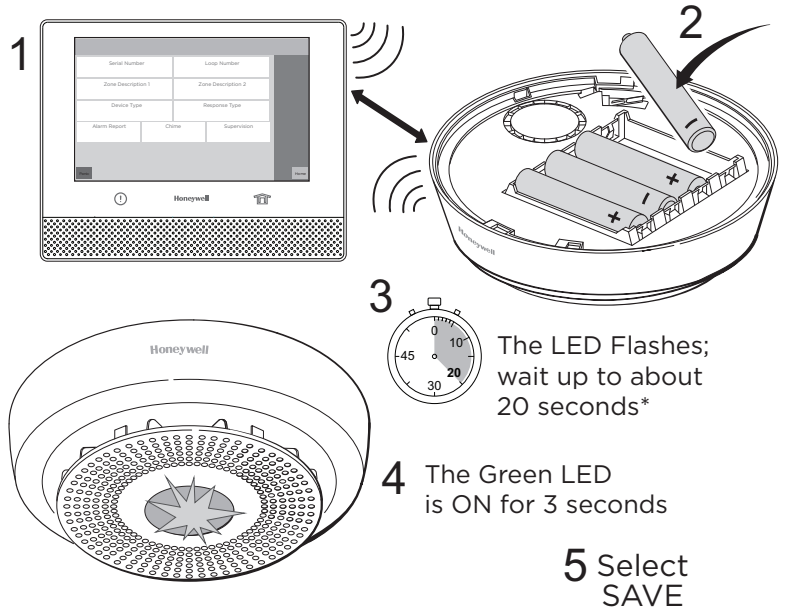
For the Lyric™ Controller

This device can be enrolled and programmed either before or after installation.

1. Set the *Lyric Controller* in Programming Mode and go to Zone Programming. Select Add New, then Serial Number. Follow the controller's instructions to begin enrollment.
2. Insert four 1.5V AA Lithium batteries (included) to activate the device and begin the enrollment process.
3. The Green LED flashes rapidly during enrollment (up to about 20 seconds*)
***NOTE:** Enrollment time varies depending on the signal strength between the device and the controller.
 - The device sends its unique MAC ID address (Serial Number) and Services information to the controller.
 - The controller registers the device and displays the transmitter data on screen.
4. Enrollment is confirmed when the Green LED is ON for 3 seconds and the controller chirps once.
5. Select SAVE to complete enrollment .
6. The device did not enroll in the system if:
 - The White LED flashes, the system chirps and the device powers down.
 - The Green LED flashes rapidly when the device is removed from the mounting bracket (the tamper switch is triggered).

To restart the enrollment process, ensure the system is in programming mode and activate the tamper switch.

Programming Mode > Zones >
Add New > Serial Number



The device can also be manually enrolled. See the Controller's Programming Guide for details.

NOTE: Once enrolled in a system, the device cannot be used with another controller until it is removed from the current controller. See the Controller's instructions for details.

Sensor Location Feature: To verify the location of each SiX device in an installation, enter programming mode and select a SiX device. The device LED lights. Select it again to turn the LED off or select the next device to locate.

For the Lyric™ Gateway

Enroll and program the SiXSIREN using AlarmNet 360™.

Using AlarmNet 360

When AlarmNet 360 is ready to enroll, insert the batteries or press the tamper switch, if the batteries are inserted. After the device is enrolled, the Green LED is on for 3 seconds.

Program

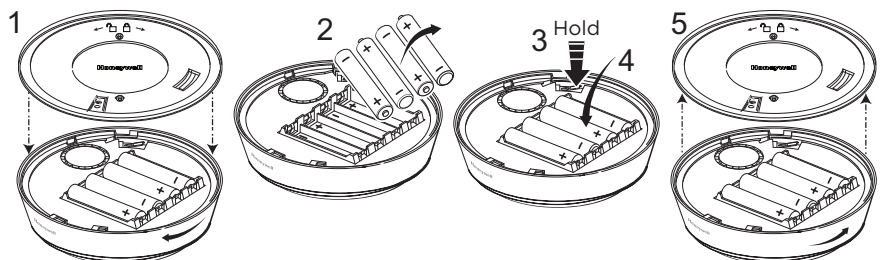
See the Controller's instructions for programming the device in the system.

Refer to the LED and Sounder table for details of chime operation when the CHIME feature is enabled (factory default is enabled).

Default SiXSIREN

If the device is enrolled in a panel different than the intended panel, and you are unable to delete it from the unintended panel, default the device:

1. Open the cover and remove the batteries.
2. Hold down the tamper switch while reinserting the batteries.
3. Reattach the cover.



This procedure is available for 24 hours after enrollment with a panel and the device remains powered (battery installed).

LEDs and Sounder

Refer to the table below for operation of the four bi-colored LEDs and an 85dB sounder.

LEDs
 R = Red ○ = ON ☀ = Rapid Flash
 G = Green ○ = Slow Flash ☀ = Strobe Flash
 W = White

Sounders
 🔊 = Chirp 🔊) = Burglary Warble 🔊) = Temporal Pulse 3
 🔊) = Temporal Pulse 4

R / W	G / W	Sounder	Status
	☀ → ○	🔊 once	Power Up – Enrollment
	○	🔊 once	Power Up – Device enrolled
	○		System is Disarmed
○			System is Armed
☀ / ☀		🔊))))))	Smoke / Heat Alarm
		🔊))))))	CO Alarm
○	○	🔊))) 3 seconds	Burglary Alarm
○		🔊) ²	Low Battery
	○		Tamper Activated
Chime operation when the CHIME feature is enabled		🔊) x 1	The system is Disarmed
		🔊) x 2	The system is Armed, Away mode
		🔊) x 3	The system is Armed, Stay mode or a Zone was Faulted

¹ Strobe flash = two flashes per second, then OFF for 1 second.

² After 7 days, the sounder chirps once every 45 seconds until the batteries are replaced or die. See the Battery Replacement section.

Test the SiXSIREN

The SiXSIREN should be tested immediately after installation and weekly. Activate Test Mode remotely from the Controller (see Controller’s manual for details). **The product must be tested at least once a year.**

Test Mode tests the sounder and LED:

- Sounder – the Burglary warble tone will sound for 3 seconds.
- LED – the White LED strobe will flash for 15 seconds.

Battery Replacement

- Twist the front cover counterclockwise and separate it from the mounting bracket.
- Remove the batteries, wait 10 seconds and **insert four new batteries of the same type and brand.**

Recommended replacement batteries:

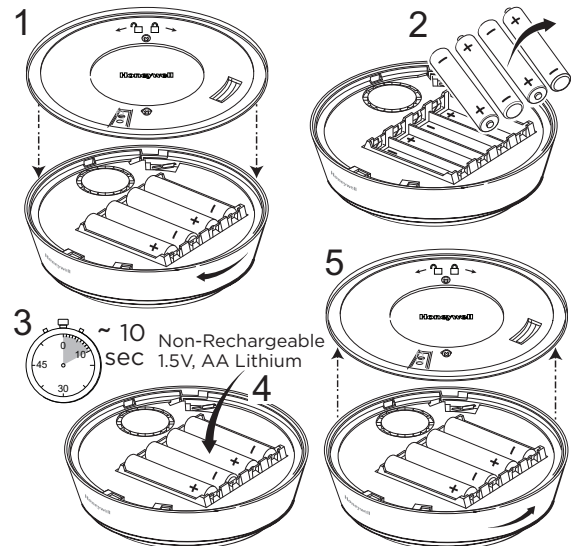
- 1.5V AA Lithium Batteries [Non-Rechargeable]
- AA Alkaline batteries can be used, but battery life will be significantly reduced.

NOTE: Do not mix old and new batteries, battery types or manufacturers.

- Reattach the front cover and twist clockwise to secure it in place.

BATTERY CAUTION: Risk of fire, explosion and burns. Do not recharge, disassemble, heat above 212 F (100 C) or incinerate. Dispose of used batteries properly. Keep away from children.

NOTE: Constant exposure to high or low temperature or high humidity may reduce battery life.



Specifications:

Range: 300 feet nominal indoors (actual range determined by the system in TEST mode)

Battery: Four 1.5V, AA Lithium, Non-Rechargeable; Energizer E², Honeywell 462

Tamper: Cover and Wall tamper

RF Frequency: 2.4GHz

Input Voltage: 3,3VDC

Current: 339 mA, Typical

Siren Output Level: 85 dB at 10 feet

Operating Temperature: 0° to 50°C / 32° to 122°F (Agency Compliance 0° to 49°C / 32° to 120°F)

Relative Humidity: 95% max. (Agency compliance – 93% max), non-condensing

Dimensions: 14.14 cm Diameter x 4.62 cm Thick / 5.5 in. Diameter x 1.8 in. Thick

Approval Listings:

FCC / IC

cETLus Listed

Conforms to UL 985 /

UL 1023

Certified to ULC-S545 &

ULC/ORD-C1023

Other Standards:

RoHS



FEDERAL COMMUNICATIONS COMMISSION & INDUSTRY CANADA STATEMENTS

The user shall not make any changes or modifications to the equipment unless authorized by the Installation Instructions or User's Manual. Unauthorized changes or modifications could void the user's authority to operate the equipment.

FCC / IC STATEMENT

This device complies with Part 15 of the FCC Rules, and Industry Canada's license-exempt RSSs. Operation is subject to the following two conditions: (1) This device may not cause harmful interference, and (2) This device must accept any interference received, including interference that may cause undesired operation.

Cet appareil est conforme à la partie 15 des règles de la FCC et exempt de licence RSS d'Industrie Canada. Son fonctionnement est soumis aux conditions suivantes: (1) Cet appareil ne doit pas causer d'interférences nuisibles. (2) Cet appareil doit accepter toute interférence reçue y compris les interférences causant une réception indésirable.

RF EXPOSURE

Warning – The antenna(s) used for this device must be installed to provide a separation distance of at least 7.8 inches (20 cm) from all persons and must not be co-located or operating in conjunction with any other antenna or transmitter except in accordance with FCC and ISED multi-transmitter product procedures.

MISE EN GARDE

Exposition aux Fréquences Radio : La/les antenne(s) utilisée(s) pour cet émetteur doit/doivent être installée(s) à une distance de séparation d'au moins 20 cm (7,8 pouces) de toute personne et ne pas être située(s) ni fonctionner parallèlement à tout autre transmetteur ou antenne, excepté en conformité avec les procédures de produit multi transmetteur FCC et ISED.

SUPPORT & WARRANTY

REFER TO THE INSTALLATION INSTRUCTIONS FOR THE CONTROL WITH WHICH THIS DEVICE IS USED, FOR DETAILS REGARDING LIMITATIONS OF THE ENTIRE ALARM SYSTEM.

For the latest documentation and online support information,
please go to:
<https://mywebtech.honeywell.com/>

For the latest warranty information, please go to:
www.honeywell.com/security/hsc/resources/wa.

For patent information, see www.honeywell.com/patents



MyWebTech



Warranty



Patents