

Quick Installation Guide

This Quick Installation Guide provides the basic steps to quickly and easily install the Lyric Gateway Residential Burglar and Fire Alarm Control Panel, using the built-in programming defaults.

Before you begin

The Gateway can be connected to the internet via a hardwire connection or wirelessly via the premise's Wi-Fi® router. Programming is done via AlarmNet 360™ using a Smart (Mobile) Device or a laptop computer.

For Wireless Installations the following are required:

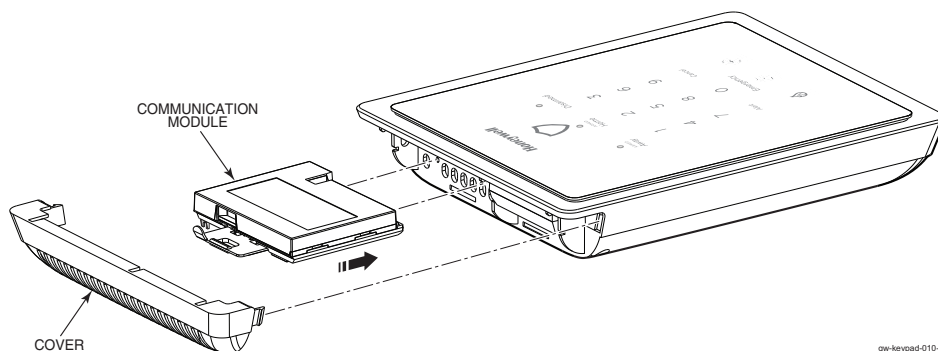
- A smart device with the AlarmNet 360 App loaded or a laptop (referred to as 'the set up device'). The App will be used to connect the Gateway panel to the customer's router onsite.
- Settings on the customer's smart device(s) must be set for Wi-Fi operation (Wi-Fi enabled).
- Access to the customer's router SSID and WPA or WPA2 password (typically located on the router's label)
- Have the customer download the MyHome Gateway and the TotalConnect® 2.0 apps from the iOS or Android App Store, iTunes or Play Store to any additional smart devices. The system supports up to eight smart devices.
- If you are not signed up for AlarmNet 360, click on "Dealer Signup" from the login screen to gain access to the Honeywell web-based programming.

Dealer Sign-Up Direct Link: https://services.alarmnet.com/AlarmnetDirectP_SignUp/Submission_Agree.aspx

Before starting the installation process, open the AlarmNet 360 App or go to the AlarmNet 360 website (www.AlarmNet360.com)

Installation Summary

1. Create an AlarmNet 360 account for the Lyric Gateway.
2. Install and power up the Gateway (refer to the *Installing the Lyric Gateway* section)
 - a. If using a Cellular Communications module, install the module before powering up the Gateway.
 - b. Connect Gateway and smart device(s) to the premises router (Wi-Fi or Ethernet) if available.
 - c. The Gateway automatically registers with AlarmNet 360 (inactive changes to active).
3. Complete the installation and programming; sync the Gateway and AlarmNet 360 (if necessary).
4. Download the MyHome Gateway and TotalConnect 2.0 apps to the customer's smart device.



Installing the Communications Module (If used)

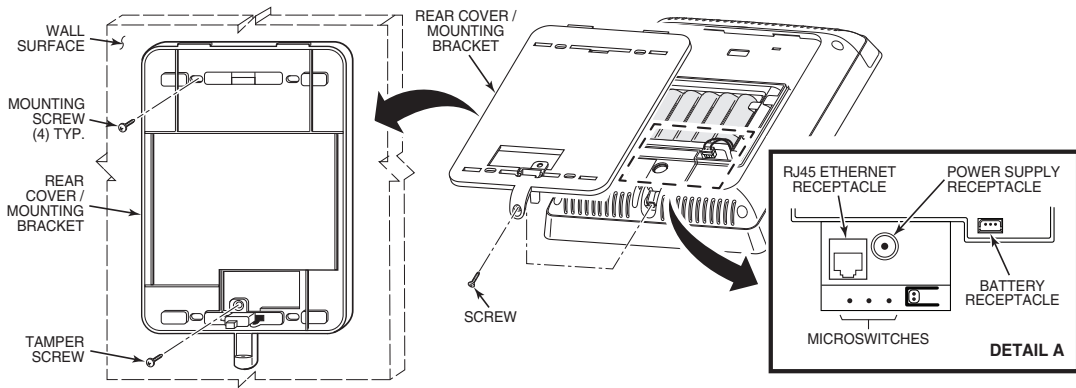
Installing the Lyric Gateway

1. If used, connect the network cable to the RJ45 receptacle on the Gateway.
2. Connect the 110VAC, 60 Hz to 9 VDC, 2.5A Power Supply p/n 300-05763V1 (300-05763V1 -CAN Canada) to the receptacle on the gateway.
3. Install the rear cover on the Gateway (if required) OR secure the rear cover/mounting bracket to a wall surface and install the Gateway and secure it with the provided screw.
4. Plug the power supply into a 24-hour, 110VAC unswitched outlet. The Gateway's Red and Green arming LEDs will blink alternately for approximately 2 minutes during power up.
5. If the Gateway's RJ45 ethernet connection is used, at the Gateway touchpad enter Installer Code + 31 to enter AP Mode and proceed to Step 10.
6. If connecting via Wi-Fi proceed to Step 7. When power up is complete the Gateway will be in Access Point [AP] mode.

Note: The AP mode will remain active for 30 minutes. If AP mode time has expired, enter the Master Code and 31 on the Gateway touchpad to reenter the AP mode.

7. If the customer's router is WPS-capable, at the Gateway touchpad enter Installer Code and 41. If not, proceed to Step 10.
8. Press the WPS button on the customer's router.

Installing the Lyric Gateway (Continued)



Wiring Table

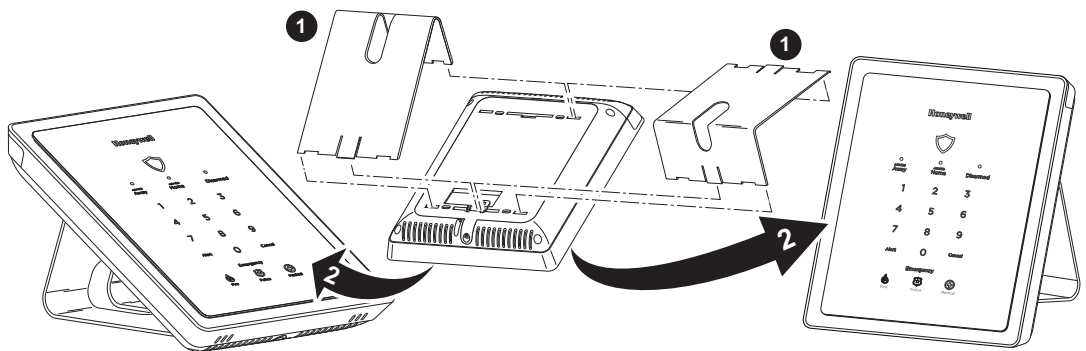
Maximum Distance Between Power Supply and Gateway	Wire Gauge
Up to 8 ft (2.44 m)	# 22
Up to 13 ft (3.96 m)	# 20
Up to 20 ft (6.1 m)	# 18

Recessed Microswitch Functions

Location	Function
Left	Factory Default
Center	Reboot
Right	(WPS)

Installing & Connecting the Lyric Gateway

9. Within approximately 3 minutes the Gateway will confirm its connection to the WiFi network.
10. Change the Wi-Fi setting of the set up device, to the Gateway AP. Select the Gateway SSID, "OPTGW_####" (#### = Last 4 digits of the Gateway MAC ID#) from the list of options and select "Connect". Enter the Gateway's 8-digit, case sensitive, WPA2 password when prompted and select Connect. (The Gateway SSID and Password are located on the bottom of the Gateway.)
11. Open the AlarmNet 360 App on the set up device and select "Manage Lyric Gateway".
12. When prompted enter the Installer Code + "Done" + "Submit".
13. The Transfer Firmware, Transfer Panel Configuration, Configure Panel Wi-Fi and Advanced, options appear:
 - a. Select "Transfer Firmware" to transfer the latest firmware to the Gateway.
 - b. Select "Transfer Panel Configuration" to transfer the panel configuration set up in AlarmNet 360 to the Gateway.
 - c. Select "Configure Panel Wi-Fi" to connect the Gateway to the customer's router. Enter the customer's SSID and WPA2 password when prompted.
 - d. Select "Advanced" to access Installer tools. Refer to the *Installation and Reference Guide* for additional information.
14. Select "Finish" when configuration is complete.
15. Select "Yes" to exit from the App. The Gateway exits from AP Mode and reconnects to the Wi-Fi network.
16. Select "Proceed to Panel Configuration".
17. Log in to AlarmNet 360.



Installing the Desk Mount

Programming the Lyric Gateway

The Lyric Gateway is programmed via AlarmNet 360 using a laptop, smart phone or other internet connected device. There are numerous options for programming the Gateway, Sensors, Wireless Keys and Keypads, Z-Wave® Home Automation Devices and accessories.

Before you begin

1. Log on to the AlarmNet 360 website (<http://alarmNet360.com>) or the AlarmNet 360 app, with your User Name, Password and account information to Program the Lyric Gateway, Sensors and Communications Modules.

Programming via AlarmNet 360 App

1. At the Installer Programming screen, enter the required information.
2. When programming is complete select "Sync Changes" to Sync Changes and send the information to the gateway.

Selecting a Default Configuration

The Lyric Gateway is pre-programmed at the factory with a built-in set of default values. Refer to the Programming Default Values section to view the pre-programmed values.

Programming the Lyric Gateway (Continued)

Enrolling Wireless Sensors

The Lyric Gateway supports 5800 series and SiX™ Series wireless sensors that can be enrolled via AlarmNet 360. An overview of the programming fields and options, as viewed via the AlarmNet 360 App is provided below. Refer to the Lyric Gateway Installation and Reference Guide for additional information.

Index	Field	Description
1	Zone Number *	Select Zone Number to Enroll OR Enroll the next available Zone Number
2	Sensor Type	Select RF 5800 OR SIX
3	Learn Sensor	Enroll the Sensor via RF Learning
4	Serial # *	Manually Enter the Device Serial Number
5	Loop # / Service	Select Loops 1-4 for RF 5800 devices OR SIX = Reed, External
6	Device Type	Select from the Device Type from the available options (Refer to the Device/ Response Type Matrix for a list of available Device Types)
7	Response Type	Select from the available Response Type options. The Response Types are dependent upon the Device Type selected. (Refer to the Device/ Response Type Matrix for a list of available Response Types)
8	Night Stay	Enable or Disable Night Stay mode (Displayed if Device Type Motion Sensor or Other is selected. Requires selection of Interior Follower or Interior With Delay Response Type)
9	Alarm Report	Enable or Disable Alarm Report option
10	Description 1	Enter a Zone descriptor
11	Description 2	Enter a Zone descriptor
12	Supervision	Select RF Supervised or RF Unsupervised
13	Chime	Select a Chime sound from the available options. (Refer to the Chime Table for a list of available Chime sounds)

Enrolling Key fobs (Wireless Keys)

The Lyric Gateway supports 5800 series and SiX Series wireless key fobs that can be enrolled via AlarmNet 360.

Index	Field	Description
1	Type	Select Type of Keyfob 5800 OR SiX
2	No. of Keys	Select Keyfob (1 Button Key, 2 Button Key, 4, 6 Button Key, 8 Button Key)
3	User Name *	Select a User from the programmed list
4	Serial # *	Manually Enter the Keyfob Serial Number
5	Available Starting Zones	Select a Keyfob Zone from the available zone list
6	Learn Keyfob	Enroll the Key Fob via RF Learning
7	Serial #	Manually Enter the Device Serial Number
8	Button	Variable depending upon Keyfob Type selected
9	Zone number	Next available zone is displayed
10	Loop Number	Variable depending upon Keyfob Type selected (Loop 1 -4)
11	Button Action	Program the button action

Enrolling Wireless Keypads

The Lyric Gateway supports Lyric Keypads. Up to 8 wireless keypads can be enrolled via AlarmNet 360.

Index	Field	Description
1	Zone Number	Next available Keypad Zone Number is displayed. This field is not programmable.
2	Keypad Type	Keypad Type is displayed. This field is not programmable.
3	Serial # / MAC *	Manually Enter the Keypad Serial / MAC Number
4	Learn Keypad	Enroll the Keypad via RF Learning
5	Version	Displays Keypad Software version
6	Description 1	Enter a Zone descriptor
7	Description 2	Enter a Zone descriptor
8	Supervision Interval	Supervision Time Interval is not programmable.

Deleting Wireless Sensors, Keys and Keypads

Refer to *Deleting Wireless Sensors, Keys and Keypads* in the Lyric Gateway Installation and Reference Guide.

Additional Programming Options

Installing Z-Wave® Home Automation Devices and Programming Smart Scenes

- 1) Install Z-Wave devices including Light Modules, Door locks, Thermostats, etc. Refer to the Lyric Gateway Installation & Reference Guide for detailed programming information.
- 2) Smart Scenes are User programmable functions and can be programmed via remote services or locally. Refer to the Lyric Gateway User Reference Guide for detailed programming information.

Adding Cameras

The Lyric Gateway supports up to eight video cameras, when viewed on the MyHome Gateway app. Refer to the Lyric Gateway User Reference Guide and the camera's installation instructions to connect cameras.

Assigning Users

Assign additional Users and User Codes, as applicable, via AlarmNet 360.

Testing the System

Enter Test mode (Walk Test) (via MyHome Gateway app)

- 1) At the Master User screen, select the "Advanced" button.
- 2) Select "Walk Test". The system enters Walk Test Mode and "Walk Test-Home To Quit" is displayed
- 3) Open each protected door and window and listen for the programmed chime for each device at the Gateway, followed by the zone's Voice Descriptor (if programmed). Identification of each faulted protection point should appear on the display, and clear when the door or window is closed.
- 4) Walk in front of the motion sensor and listen for the programmed chime and the zone's Voice Descriptor (if programmed).
- 5) When testing is complete, select the Home button and enter the Master User Code.
- 6) Press each key on the wireless key to confirm it performs its assigned function.

Programming Defaults/Options

The following table provides an overview of the Programming Fields, Options and Defaults, as viewed via the AlarmNet 360 App. Shaded fields are not programmable.

Programming Field	Options	LCP300-L Default	LCP300-LC Default
Communicator			
City ID	01-99	Blank	Blank
CS ID	01-FE	Blank	Blank
Sub ID	0001-9999	Blank	Blank
Advanced Protection Logic	Yes, No	Yes	Yes
Supervision	None, Daily, 30 Days	Daily	Daily
High Usage Plan	Yes, No	No	No
Communications Path (Internal Device)	IP, Cellular, Cellular and IP	IP	IP
Old Alarm Time	10 Minutes, 15 Minutes, 30 Minutes, 1 Hour, 2 Hours, 4 Hours, 8, Hours, 12 Hours, 24 Hours	10 Minutes	10 Minutes
IP Fault Time	1 - 99 Minutes	60 Minutes	60 Minutes
Use DHCP	Yes, No	Yes	Yes
NIC IP Address	Up to 12 digits (Viewable only unless DHCP is disabled)	255.255.255.255	255.255.255.255
Subnet Mask	Up to 12 digits (Viewable only unless DHCP is disabled)	255.255.255.255	255.255.255.255
Gateway IP Address	Up to 12 digits (Viewable only unless DHCP is disabled)	255.255.255.255	255.255.255.255
DNS Server IP Address	Up to 12 digits (Viewable only unless DHCP is disabled)	255.255.255.255	255.255.255.255
Cellular Fault Time	1 - 99 Minutes	60 Minutes	60 Minutes
Cellular 24 Hr Test/UL864 Comm. Fire	Yes, No	No	No
Cellular Rollover	Yes, No	Yes	Yes
System			
Alarm Report Delay	No delay, 15 Seconds, 30 Seconds, 45 Seconds	30 Seconds	No Delay
Burglary Alarm Sound	Yes, No	Yes	Yes
Daylight Savings Time	Yes, No	Yes	Yes
Time Zone Offset		(UTC-5:00 Eastern Time (US & Canada))	(UTC-5:00 Eastern Time (US & Canada))
Software Version	XX.XX.XXXXX.XXX (Viewable only)	XX.XX.XXXXX.XXX	XX.XX.XXXXX.XXX
Temperature Unit	Fahrenheit, Celsius	Fahrenheit	Fahrenheit
Installer Language	English	English	English
User Language	English	English	English
Two-way Voice	(Programmed via AlarmNet 360)	No	No
Z-Wave Support	Yes, No	Yes	Yes
Display Alarm Cancel	Yes, No	Yes	Yes
Lack of Usage Notify	Usage Not Monitored, 1 Day, 7 Days, 27 Days, 90 Days, 180 Days, 365 Days	Usage Not Monitored	Usage Not Monitored
RF Jam	Disabled, RF Jam Log, RF Jam Log and Report	RF Jam Log	RF Jam Log

Programming Defaults/Options (Continued)

Programming Field	Options	LCP300-L Default	LCP300-LC Default
Alarm Options	Not applicable (LCP300-L) Unlimited, 1, 2, 10 (LCP300-LC)	N/A	Unlimited
Number of Reports (Swinger Shutdown)	1, 2, 3, 4, 5, 6 (LCP300-L) 1, 2, 3, 4, 5, 6, Unlimited (LCP300-LC)	2	4
First Test Report Offset	6 Hours, 12 Hours, 18 Hours, 24 Hours	6 Hours	6 Hours
Report Frequency	Never, Every Day, Every 7 Days, Every 30 Days	Never	Never
System	Not programmable (Viewable only)	Yes	Yes
Reporter	Not programmable (Viewable only)	Yes	Yes
Panel Sync Delay Time	0 Minutes - 120 Minutes	3 Minutes	3 Minutes
Z-Wave Door Lock	Disabled, Arm Stay, Arm Away, Arm Without Autostay	Disabled	Disabled
Area			
System Timer			
Entry Delay 1	None, 15 Seconds, 30 Seconds, 45 Seconds, 60 Seconds, 90 Seconds, 2 Minutes, 3 Minutes, 4 Minutes	30 Seconds	30 Seconds
Entry Delay 2	None, 15 Seconds, 30 Seconds, 45 Seconds, 60 Seconds, 90 Seconds, 2 Minutes, 3 Minutes, 4 Minutes	30 Seconds	30 Seconds
Exit Delay	45, 60, 90, 120 Seconds (LCP300-L) None, 15, 30, 45, 60, 90, 120 Seconds (LCP300-LC)	60 Seconds	60 Seconds
Burglary Bell Timeout	No, 4 Minutes, 8 Minutes, 12 Minutes, 16 Minutes,	4 Minutes	4 Minutes
Fire Bell Timeout	No, 4 Minutes, 8 Minutes, 12 Minutes, 16 Minutes,	4 Minutes	4 Minutes
System Operation			
Quick Arm	Yes, No	Yes	Yes
Quick Exit	Yes, No	Yes	Yes
Restart Exit Time	Yes, No	Yes	Yes
Chime Mode	Yes, No	Yes	No
Force Bypass	Yes, No	No	No
Exit Warning	Not programmable (LCP300-L) Yes, No (LCP300-LC)	Yes	Yes
Display Exit Time	Yes, No	Yes	Yes
Power-Up In Previous	Not programmable (LCP300-L) Yes, No (LCP300-LC)	Yes	Yes
Auto Stay Arming	Yes, No	Yes	Yes
Arm Confirm	All RF, None, RF Keyfob, RF Keypad	None	RF Keyfob
Reporter			
Arm Away	Yes, No	Yes	Yes
Arm Stay	Yes, No	Yes	Yes
Disarm	Yes, No	Yes	Yes
Exit Error	Not programmable (LCP300-L) Yes, No (LCP300-LC)	Yes	Yes
Alarm Restore	Yes, No	Yes	Yes
Alarm Cancel	Yes, No	Yes	Yes
Test	Not programmable (LCP300-L) Yes, No (LCP300-LC)	Yes	Yes
Test Restore	Not programmable (LCP300-L) Yes, No (LCP300-LC)	Yes	Yes
Low Battery	Yes, No	Yes	Yes
Low Battery Restore	Yes, No	Yes	Yes
RF Low Battery	Yes, No	Yes	Yes
RF Low Battery Restore	Yes, No	Yes	Yes
Recent Closing	Not programmable (LCP300-L) Yes, No (LCP300-LC)	Yes	Yes
Event Log Full	Yes, No	Yes	Yes
Trouble	Yes, No	Yes	No
Trouble Restore	Yes, No	Yes	Yes
Bypass	Yes, No	Yes	Yes
Bypass Restore	Yes, No	Yes	Yes
AC Loss	Yes, No	Yes	Yes
AC Loss Restore	Yes, No	Yes	Yes
Log All Events	Yes, No	Yes	Yes
Log Alarm Events	Yes, No	Yes	Yes
Log Open/Close Events	Yes, No	Yes	Yes
Log Trouble Events	Yes, No	Yes	Yes
Log Non Security Events	Yes, No	Yes	Yes
Log Bypass Events	Yes, No	Yes	Yes

Programming Defaults/Options (Continued)

Programmed defaults are shown. Refer to the Programming Field Explanations for additional information.

Zone No.	Loop No.	Device Type	Response Type	Alarm Report	Chime	Supervision	Arm Night	Zone Descriptor
1	2	Door	Entry Exit 1	Yes	Standard	RF Supervised	N/A	Front
2	2	Door	Entry Exit 1	Yes	Standard	RF Supervised	N/A	Back
3	2	Window	Perimeter	Yes	Standard	RF Supervised	N/A	
4	1	Motion Sensor	Interior with Delay	Yes	Disabled	RF Supervised	No	
5-64	See Programming Field Explanations							
65	1	Not Used	Not Used	Yes	Standard	RF Supervised	N/A	Main
66	1	Not Used	Not Used	Yes	Standard	RF Supervised	N/A	Main
67	1	Not Used	Not Used	Yes	Standard	RF Supervised	N/A	Main
68	1	Not Used	Not Used	Yes	Standard	RF Supervised	N/A	Main
131	3	Key Fob	Arm Away	N/A	N/A	Button	N/A	
132	2	Key Fob	Disarm	N/A	N/A	Button	N/A	
133	4	Key Fob	Arm Stay	N/A	N/A	Button	N/A	
134	1	Key Fob	No Response	N/A	N/A	Button	N/A	
135	3	Key Fob	Arm Away	N/A	N/A	Button	N/A	
136	2	Key Fob	Disarm	N/A	N/A	Button	N/A	
137	4	Key Fob	Arm Stay	N/A	N/A	Button	N/A	
138	1	Key Fob	No Response	N/A	N/A	Button	N/A	
139	3	Key Fob	Arm Away	N/A	N/A	Button	N/A	
140	2	Key Fob	Disarm	N/A	N/A	Button	N/A	
141	4	Key Fob	Arm Stay	N/A	N/A	Button	N/A	
142	1	Key Fob	No Response	N/A	N/A	Button	N/A	
143	3	Key Fob	Arm Away	N/A	N/A	Button	N/A	
144	2	Key Fob	Disarm	N/A	N/A	Button	N/A	
145	4	Key Fob	Arm Stay	N/A	N/A	Button	N/A	
146	1	Key Fob	No Response	N/A	N/A	Button	N/A	
147	3	Key Fob	Arm Away	N/A	N/A	Button	N/A	
148	2	Key Fob	Disarm	N/A	N/A	Button	N/A	
149	4	Key Fob	Arm Stay	N/A	N/A	Button	N/A	
150	1	Key Fob	No Response	N/A	N/A	Button	N/A	
151	3	Key Fob	Arm Away	N/A	N/A	Button	N/A	
152	2	Key Fob	Disarm	N/A	N/A	Button	N/A	
153	4	Key Fob	Arm Stay	N/A	N/A	Button	N/A	
154	1	Key Fob	No Response	N/A	N/A	Button	N/A	
155	3	Key Fob	Arm Away	N/A	N/A	Button	N/A	
156	2	Key Fob	Disarm	N/A	N/A	Button	N/A	
157	4	Key Fob	Arm Stay	N/A	N/A	Button	N/A	
158	1	Key Fob	No Response	N/A	N/A	Button	N/A	
159	3	Key Fob	Arm Away	N/A	N/A	Button	N/A	
160	2	Key Fob	Disarm	N/A	N/A	Button	N/A	
161	4	Key Fob	Arm Stay	N/A	N/A	Button	N/A	
162	1	Key Fob	No Response	N/A	N/A	Button	N/A	
280	N/A	Temperature	Monitor	Yes	Disabled	High Temp	N/A	
281	N/A	Temperature	Monitor	Yes	Disabled	Low Temp	N/A	
282	N/A	Temperature	Monitor	Yes	Disabled	High Temp	N/A	
283	N/A	Temperature	Monitor	Yes	Disabled	Low Temp	N/A	
284	N/A	Temperature	Monitor	Yes	Disabled	High Temp	N/A	
285	N/A	Temperature	Monitor	Yes	Disabled	Low Temp	N/A	
286	N/A	Temperature	Monitor	Yes	Disabled	High Temp	N/A	
287	N/A	Temperature	Monitor	Yes	Disabled	Low Temp	N/A	
288	N/A	Temperature	Monitor	Yes	Disabled	High Temp	N/A	
289	N/A	Temperature	Monitor	Yes	Disabled	Low Temp	N/A	
290	N/A	Temperature	Monitor	Yes	Disabled	High Temp	N/A	
291	N/A	Temperature	Monitor	Yes	Disabled	Low Temp	N/A	
840-847	Smart Device Zones - See Zone Programming Notes							
850	N/A	SiX™ Keypad	N/A	N/A	N/A	60Min	N/A	
851	N/A	SiX™ Keypad	N/A	N/A	N/A	60Min	N/A	
852	N/A	SiX™ Keypad	N/A	N/A	N/A	60Min	N/A	
853	N/A	SiX™ Keypad	N/A	N/A	N/A	60Min	N/A	
854	N/A	SiX™ Keypad	N/A	N/A	N/A	60Min	N/A	
855	N/A	SiX™ Keypad	N/A	N/A	N/A	60Min	N/A	
856	N/A	SiX™ Keypad	N/A	N/A	N/A	60Min	N/A	
857	N/A	SiX™ Keypad	N/A	N/A	N/A	60Min	N/A	
995	N/A	Fire	Fire No Verification	Yes	N/A	Panic Trigger	N/A	
996	N/A	Medical	24 Hour Auxiliary	Yes	N/A	Panic Trigger	N/A	
999	N/A	Police	24 Hour Silent	Yes	N/A	Panic Trigger	N/A	

Programming Defaults/Options (Continued)

Zone Programming Notes

Zones 1-64 are RF Zones (Refer to "SENSORS" in AlarmNet 360)
 Zones 65-68 are 5800 Garage Door Zones (Refer to "SENSORS" in AlarmNet 360)
 Zones 131-162 are Keyfob Zones (Refer to "KEYFOBS" in AlarmNet 360)
 Zones 280-291 are Temperature Zones (Refer to "SENSORS" in AlarmNet 360)
 Zones 840 - 847 are reserved for Smart Devices
 Zones 850-857 are Keypad Zones (Refer to "KEYPADS" in AlarmNet 360)
 Zones 995, 996 and 999 are Panic Zones (Refer to "SENSORS" in AlarmNet 360)

Explanation of Zone Assignment Table Headings

Loop Number - Used with 5800 Devices. Entries are 1-4, depending on device being used. Refer to the transmitter's instructions or the figure provided for appropriate loop numbers.

Device Type- Dependent upon the Zone Number being programmed.

Response Type/Action - Dependent upon the Device Type that has been selected.

Arm Night - Activate/Deactivate specific Motion Sensors in Night Stay mode (Motion Sensor and Other Response Type only).

Options: Yes, No

Alarm Report - Activate/Deactivate reporting option for the device.

Options: Yes, No

Description 1/2 - Enter Zone Descriptors on displayed keypad. System Announces pre-programmed voice descriptors.

Supervision - Dependent upon the Zone Number being programmed.

Wireless Zone (Zone 1-68)	Key (Zone 131-162)	Temperature (Zone 280-291)	Keypad (850-857)
RF Supervised	Button	High Temp	60Min
RF Unsupervised		Low Temp	

Chime - Enable/Disable chime sounding for the device (applies to Entry/Exit, Perimeter and Interior Response Types only).

Disabled	Melody Long	Alert 1	Doorbell 2
Standard	Ascend	Alert 2	Evolve
Melody	Ascend Long	Doorbell 1	

Device/Response Type Matrix

Device Type	Response Type	Entry Exit 1	Entry Exit 2	Perimeter	Resident Monitor	Resident Response	General Monitor	General Response	Day/Night	Interior Follower	Interior With Delay	Fire No Verification	Fire with Verification	Carbon Monoxide	24 Hour Auxiliary	24 Hour Audible	24 Hour Silent	Monitor	Not Used	Arm Stay	Arm Away	Disarm	No Response	Silent Burglary	Garage	Garage Monitor	Trouble
		Carbon Monoxide Detector														x											
Door		x	x	x	x	x	x	x																			
Environmental															x			x									
Fire												x							x								
Flood															x			x									
Garage Door																									x	x	
Glass Break					x	x	x	x																			
Heat Sensor												x															
Medical															x	x			x								
Motion Sensor					x	x	x	x	x	x	x																
Other		x	x	x	x	x	x	x	x	x	x	x	x	x	x	x	x	x	x	x	x	x	x	x	x	x	x
Police																x	x	x		x							
Smoke Detector												x	x														
Temperature															x			x									
Window		x	x	x	x	x	x	x	x										x								

Documentation and Online Support

Refer to the following documents for additional information, as required. Copies may be requested from Honeywell.

AlarmNet 360 Online Help Guide (p/n 800-11248 or higher)

Lyric Gateway Getting Started Guide (p/n 800-22261 or higher)

Lyric Gateway Installation and Reference Guide (p/n 800-21666 or higher)

Lyric Gateway User Reference Guide (p/n 800-21670 or higher)

Lyric Communicators Installation Instructions (p/n 800-21145 or higher)

For online documents visit: <https://mywebtech.honeywell.com>.

Installation Notes

When selecting a location for the Lyric Controller, be sure to provide a separation of at least 10 feet between 2.4GHz devices such as Wi-Fi Routers/Access Points.

Important Notes About External Antennas

If an external cellular radio antenna is used, the antenna may be installed or replaced ONLY by a professional installer:

Lyric-3G/3GC	Lyric-CDMA	LYRICLTE-A	LYRICLTE-C	LYRICLTE-V
The external antenna must not exceed a maximum directional gain (including cable loss) of:				
6.0 dBi at 850 MHz 2.5 dBi at 1900 MHz	9.3 dBi at 850 MHz 8.2 dBi at 1900 MHz	3.25 dBi at 850 MHz 5.5 dBi at 1700 MHz 2.5 dBi at 1900 MHz	0.6 dBi at 850 MHz, 5.5 dBi at 1700 MHz 2.5 dBi at 1900 MHz	7.31 dBi at 780 MHz 7.35 dBi at 1700 MHz.
Under no conditions may an antenna gain be used that would exceed the ERP and EIRP power limits as specified in:				
FCC Parts 22H, 24E and 27 (3G) OR IC RSS-130, RSS-132, RSS-133, and RSS-139 (3GC)	FCC Parts 22H, 24E and 27	FCC Parts 22H, 24E and 27	IC RSS-130, RSS-132, RSS-133, and RSS-139	FCC Parts 22H, 24E and 27

RF Exposure Warning

The antenna(s) used for this device must be installed to provide a separation distance of at least 7.8 inches (20 cm) from all persons and must not be co-located or operating in conjunction with any other antenna or transmitter except in accordance with FCC and ISED multi-transmitter product procedures.

Mise en Garde

Exposition aux Fréquences Radio: La/les antenne(s) utilisée(s) pour cet émetteur doit/doivent être installée(s) à une distance de séparation d'au moins 20 cm (7,8 pouces) de toute personne et ne pas être située(s) ni fonctionner parallèlement à tout autre transmetteur ou antenne, excepté en conformité avec les procédures de produit multi transmetteur FCC et ISEDs.

Lyric Lock

This system supports Lyric Lock, an advanced feature designed to keep it functioning optimally. Lyric Lock capabilities include: the ability to interact with Honeywell and your company's network for the setup and programming of system features, support for remote software updates and the ability (when enabled) to enhance the end user's security by preventing unauthorized takeover of the system by another monitoring company. In the event that the end user wishes to authorize another company to take over the system, the end user may request that Honeywell remotely disable Lyric Lock. Honeywell will require documentation that the end user has attempted to contact your company three times and that your company has failed to respond, or failed to agree to the end user's request.

Use of these products in combination with non-Honeywell products in a wireless mesh network, or to access, monitor or control devices in a wireless mesh network via the internet or another external wide area network, may require a separate license from SIPCO, LLC. for more information, contact SIPCO, LLC or IPCO, LLC at 8215 Roswell Road., Building 900, Suite 950, Atlanta, GA 303350, or at www.sipcollc.com or www.intusiq.com

Federal Communications Commission (FCC) Part 15

The user shall not make any changes or modifications to the equipment unless authorized by the Installation Instructions or User's Manual. Unauthorized changes or modifications could void the user's authority to operate the equipment.

CLASS B DIGITAL DEVICE STATEMENT

This equipment has been tested to FCC requirements and has been found acceptable for use. The FCC requires the following statement for your information:

This equipment generates and uses radio frequency energy and if not installed and used properly, that is, in strict accordance with the manufacturer's instructions, may cause interference to radio and television reception. It has been type tested and found to comply with the limits for a Class B computing device in accordance with the specifications in Part 15 of FCC Rules, which are designed to provide reasonable protection against such interference in a residential installation. However, there is no guarantee that interference will not occur in a particular installation. If this equipment does cause interference to radio or television reception, which can be determined by turning the equipment off and on, the user is encouraged to try to correct the interference by one or more of the following measures:

- If using an indoor antenna, have a quality outdoor antenna installed.
- Reorient or relocate the receiving antenna.
- Move the radio or television receiver away from the receiver/control.
- Move the antenna leads away from any wire runs to the receiver/control.
- Plug the receiver/control into a different outlet so that it and the radio or television receiver are on different branch circuits.
- Consult the dealer or an experienced radio/TV technician for help.

This Class B digital apparatus complies with Canadian ICES-003.

Cet appareil numérique de la classe B est conforme à la norme NMB-003 du Canada.

FCC IC Statement

This device complies with Part 15 of FCC Rules and Industry Canada's license exempt RSSs. Operation is subject to the following two conditions: (1) This device may not cause harmful interference, and (2) This device must accept any interference received, including interference that may cause undesired operation.

Cet appareil est conforme à la partie 15 des règles de la FCC et exempt de licence RSS d'Industrie Canada. Son fonctionnement est soumis aux conditions suivantes: (1) Cet appareil ne doit pas causer d'interférences nuisibles. (2) Cet appareil doit accepter toute interférence reçue y compris les interférences causant une réception indésirable.

SUPPORT & WARRANTY

For the latest documentation and online support information, please go to:
<https://mywebtech.honeywell.com/>

For the latest warranty information, please go to:
www.honeywell.com/security/hsc/resources/wa.

For patent information, please go to: www.honeywell.com/patents



MyWebTech



Warranty



Patents

Honeywell, Total Connect and Lyric are registered trademarks of Honeywell International Inc. Honeywell AlarmNet 360, and SiX are trademarks of Honeywell International Inc. All other trademarks and service marks are the properties of their respective owners.



800-21668 10/16 Rev D

Honeywell

2 Corporate Center Drive, Suite 100
P.O. Box 9040, Melville, NY 11747
© 2016 Honeywell International Inc.
www.honeywell.com/security